

**TECHNICAL MANUAL**

**ORGANIZATIONAL AND DIRECT SUPPORT MAINTENANCE**

**REPAIR PARTS AND SPECIAL TOOLS LISTS**

**(INCLUDING DEPOT MAINTENANCE REPAIR PARTS AND**

**SPECIAL TOOLS)**

**FOR**

**INTERFACE TEST, PROCESSOR, RADAR TS-2973A/APS-94D**

**(NSN 6625-01-071-8579)**

---

**HEADQUARTERS, DEPARTMENT OF THE ARMY**

**6 JANUARY 1982**

TECHNICAL MANUAL  
 No. 11-6625-1831-23P

HEADQUARTERS  
 DEPARTMENT OF THE ARMY  
 WASHINGTON, DC, 6 January 1982

**ORGANIZATIONAL AND DIRECT SUPPORT MAINTENANCE**  
**REPAIR PARTS AND SPECIAL TOOLS LISTS**  
**(INCLUDING DEPOT MAINTENANCE REPAIR PARTS AND**  
**SPECIAL TOOLS)**  
**FOR**  
**INTERFACE TEST, PROCESSOR, RADAR TS-2973A/APS-94D**  
**(NSN 6625-01-071-8579)**

**Current as of 16 July 1981**

**REPORTING ERRORS AND RECOMMENDING IMPROVEMENTS**

You can help improve this manual. If you find any mistakes or if you know of a way to improve the procedures, please let us know. Mail your letter, DA Form 2028 (Recommended Changes to Publications and Blank Forms), or DA Form 2028-2 located in back of this manual direct to Commander, US Army Communications-Electronics Command, ATTN: DRSEL-ME-MQ, Fort Monmouth, NJ 07703. In either case, a reply will be furnished direct to you.

**Table of Contents**

SECTION		Page	Illus Figure
	I. Introduction .....	1	
	II. Repair Parts List .....	5	
Group	00 Interface Test, Processor, Radar TS-2973A/APS-94D .....	5	1
	01 Panel, Test, Electrical (Front Detail).....	7	2
	Panel Test, Electrical Rear Detail) .....	11	4
	Chassis Assembly Electrical . .....	13	5
	0101 Clock and Counter Module 1A3.....	17	6
	0102 Oscillator and Switch Module 1A2.....	19	7
	0103 Power Supply Regulator Module 1A3.....	23	8
	0104 Electronic Component Assembly 1TB1 .....	27	9
	0105 Circuit Card Assembly ECCM 1A6 .....	29	10
	0106 Cable Assembly, Special Purpose Electrical CX-12307U W1 . ....	31	11
	0107 Cable Assembly, Special Purpose Electrical CX-12306/U W2 . ....	31	11
	0108 Cable Assembly, Special Purpose Electrical CX-122401U W3 ....	31	11
	0109 Cable Assembly RF (3 Ft) CG-3618/U W4 .....	31	11
	0110 Cable Assembly RF (3 Ft) CG-3618/U W5 .....	31	11
	0111 Cable Assembly RF (3 Ft) CG-3618/U W6 .....	31	11
	0112 Cable Assembly RF (6 Ft)} CG-3618/U W7 .....	31	11
	0113 Cable Assembly RF (6 Ft) CG-3618/U W8 .....	31	11

**\*This manual supersedes TM 11- 6625 - 1831 - 23P, 13 April 1981.**

		Page	Illus Figure
Group 01	0114 Cable Assembly RF (6 Ft)} CG-3618/U W9 .....	31	11
	0115 Cable Assembly RF 16 Ft) W10 .....	31	11
	0116 Cable Assembly RF {(6 Ft) W11 .....	31	11
	0117 Cable Assembly RF (6 Ft) W12 .....	31	11
	0118 Cable Assembly RF (6 Ft) W13 .....	31	11
	0119 Cable Assembly RF (2 Ft) W14 .....	31	11
02	Control-Monitor, Interface Test C-10857/APS-94F .....	33	12
03	Case, Test Set .....	35	13
04	Extender Card MX-8630/APS-94D .....	37	14
05	Extender Card MX-8740/APS-94D .....	37	14
SECTION	III. Special Tools List (Not applicable)		
	IV. National Stock Number and Part Number Index .....	38	

SECTION I

INTRODUCTION

**1. Scope**

This manual lists spares and repair parts; special tools; special test, measurement, and diagnostic equipment (TMDE), and other special support equipment required for performance of organizational and direct support maintenance of the TS-2973A/APS-94D. It authorizes the requisitioning and issue of spares and repair parts as indicated by the source and maintenance codes.

**2. General**

This Repair Parts and Special Tools List is divided into the following sections:

*a. Section II. Repair Parts List.* A list of spares and repair parts authorized for use in the performance of maintenance. The list also includes parts which must be removed for replacement of the authorized parts. Parts lists are composed of functional groups in numeric sequence, with the parts in each group listed in figure and item number sequence.

*b. Section III. Special Tools List.* Not applicable.

*c. Section IV. National Stock Number and Part Number Index.* A list, in National item identification number (NIIN) sequence, of all National stock numbers (NSN) appearing in the listings, followed by a list, in alphameric sequence, of all part numbers appearing in the listings. National stock numbers and part numbers are cross-referenced to each illustration figure and item number appearance.

**3. Explanation of Columns**

*a. Illustration.* This column is divided as follows:

(1) Figure number. Indicates the figure number of the illustration on which the item is shown.

(2) Item number. The number used to identify item called out in the illustration.

*b. Source, Maintenance, and Recoverability (SMR) Codes.*

(1) *Source code.* Source codes indicate the manner of acquiring support items for maintenance, repair, or overhaul of end items. Source codes are entered in the first and second positions of the Uniform SMR Code format as follows

<i>Code</i>	<i>Definition</i>
PA-Item procured and stocked for anticipated or known usage.	

<i>Code</i>	<i>Definition</i>
AF-Item to be assembled at direct support maintenance level.	
XA-Item is not procured or stocked because the replacement of the next higher assembly.	
XD-A support item that is not stocked. When required, item will be procured through normal supply channels.	

**NOTE**

**Cannibalization or salvage may be used as a source of supply for any items source coded above except those coded XA and aircraft support items as restricted by AR 700-42.**

(2) Maintenance code. Maintenance codes are assigned to indicate the levels of maintenance authorized to USE and REPAIR support items. The maintenance codes are entered in the third and fourth positions of the Uniform SMR Code format as follows:

(a) The maintenance code entered in the third position will indicate the lowest maintenance level authorized to remove, replace, and use the support item. The maintenance code entered in the third position will indicate one of the following levels of maintenance:

<i>Code</i>	<i>Application/Explanation</i>
O-Support item is removed, replaced, used at the organizational level.	
F-Support item is removed, replaced, used at the direct support level.	
D-Support items that are removed, replaced, used at depot, mobile depot, specialized repair activity only.	

*b.* The maintenance code entered in the fourth position indicates whether the item is to be repaired and identifies the lowest maintenance level with the capability to perform complete repair (i.e., all authorized maintenance functions). This position will contain one of the following maintenance codes:

<i>Code</i>	<i>Application/Explanation</i>
F-The lowest maintenance level capable of complete repair of the support item is the direct support level.	

*Code*                      *Application/Explanation*  
 D-The lowest maintenance level capable of complete repair of the support item is the depot level.  
 Z-Nonreparable. No repair is authorized.

(3) Recoverability code. Recoverability codes are assigned to support items to indicate the disposition action on unserviceable items. The recoverability code is entered in the fifth position of the Uniform SMR Code format as follows:

<i>Recoverability codes</i>	<i>Definition</i>
Z-Nonreparable item.	When unserviceable, condemn and dispose at the level indicated in position 3.
F- Repairable item.	When uneconomically repairable, condemn and dispose at the direct support level.
L-Repairable item.	Repair, condemnation, and disposal not authorized below depot/ specialized repair activity level.

c. *National Stock Number.* Indicates the National stock number assigned to the item and will be used for requisitioning purposes.

d. *Federal Supply Code for Manufacturer (FSCM).* The FSCM is a 5-digit numeric code listed in SB 708-41/42 which is used to identify the manufacturer, distributor, or Government agency, etc.

e. *Part Number.* Indicates the primary number used by the manufacturer (individual, company, firm, corporation, or Government activity), which controls the design and characteristics of the item by means of its engineering drawings, specifications, standards, and inspection requirements to identify an item or range of items.

**NOTE**

**When a stock numbered item is requisitioned, the repair part received may have a different part number than the part being replaced.**

f. *Description* Indicates the Federal item name and, if required, a minimum description to identify the item.

g. *Unit of Measure (U/M).* Indicates the standard of the basic quantity of the listed item as used in perform-in the actual maintenance function. This measure is expressed by a two-character alphabetical abbreviation (e.g., ea., in, pr, etc.). When the unit of measure differs from the unit of issue, the lowest unit of issue that will satisfy the required units of measure will be requisitioned.

h. *Quantity Incorporated in Unit.* Indicates the quantity of the item used in the breakout shown on

the illustration figure, which is prepared for a functional group, subfunctional group, or an assembly.

**4. Special Information**

a. Detailed assembly instructions for items source coded to be assembled are found in TM 11-6625-1831-13. Assembly components are listed immediately following the item to be assembled.

b. The following publication pertains to the TS-2973A/APS-94D and its components: TM 11-6625-1831-13, Interface Test, Processor, Radar TS-2973/APS-94D (To be published).

c. National stock numbers (NSN's) that are missing from P source coded items have been applied for and will be added to this TM by future change/revision when they are entered in the Army Master Data File (AMDF). Until the NSN's are established and published, submit exception requisitions to Commander, US Army Communications-Electronics Command, ATTN: DRSEL-MM, Fort Monmouth, NJ 07703 for the part required to support your equipment.

**5. How to Locate Repair Parts**

a When National stock number or part number is unknown.

(1) *First.* Using the table of contents, determine the functional group within which the item belongs. This is necessary since illustrations are prepared for functional groups and listings are divided into the same groups.

(2) *Second* Find the illustration covering the functional group to which the item belongs.

(3) *Third* Identify the item on the illustration and note the illustration figure and item number of the item.

(4) *Fourth.* Using the Repair Parts Listing, find the figure and item number noted on the illustration.

b When National stock number or part number is known.

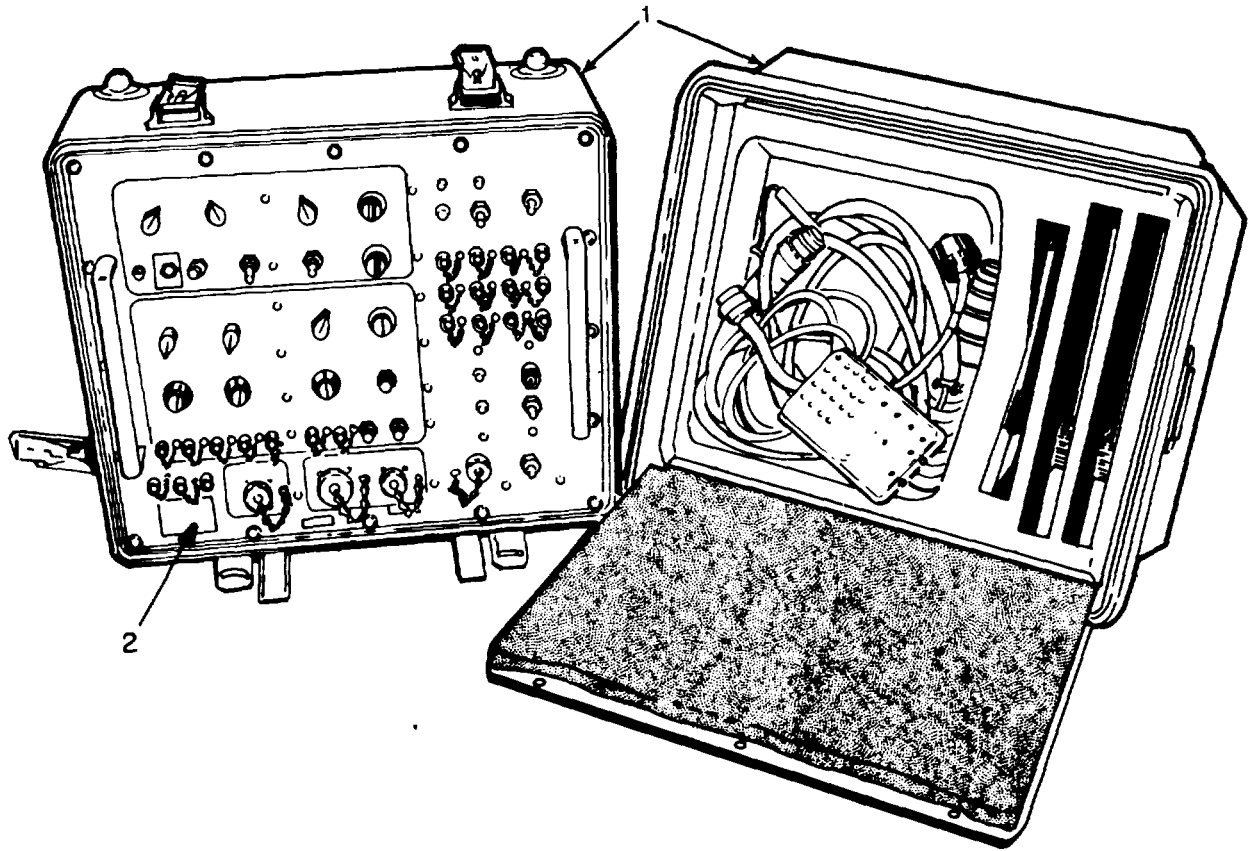
(1) *First* Using the Index of National Stock Numbers and Part Numbers, find the pertinent National stock number or part number. This index is in NIIN sequence followed by a list of part numbers in alphanumeric sequence, cross-referenced to the illustration figure number and item number.

(2) *Second* After finding the figure and item number, locate the figure and item number in the repair parts list.

**6. Abbreviations**

Not applicable.

(Next printed page is 4)



EL6KD001

Figure 1. Interface Test, Processor, Radar, TS-2973A/APS-94D  
(Sheet 1 of 3)

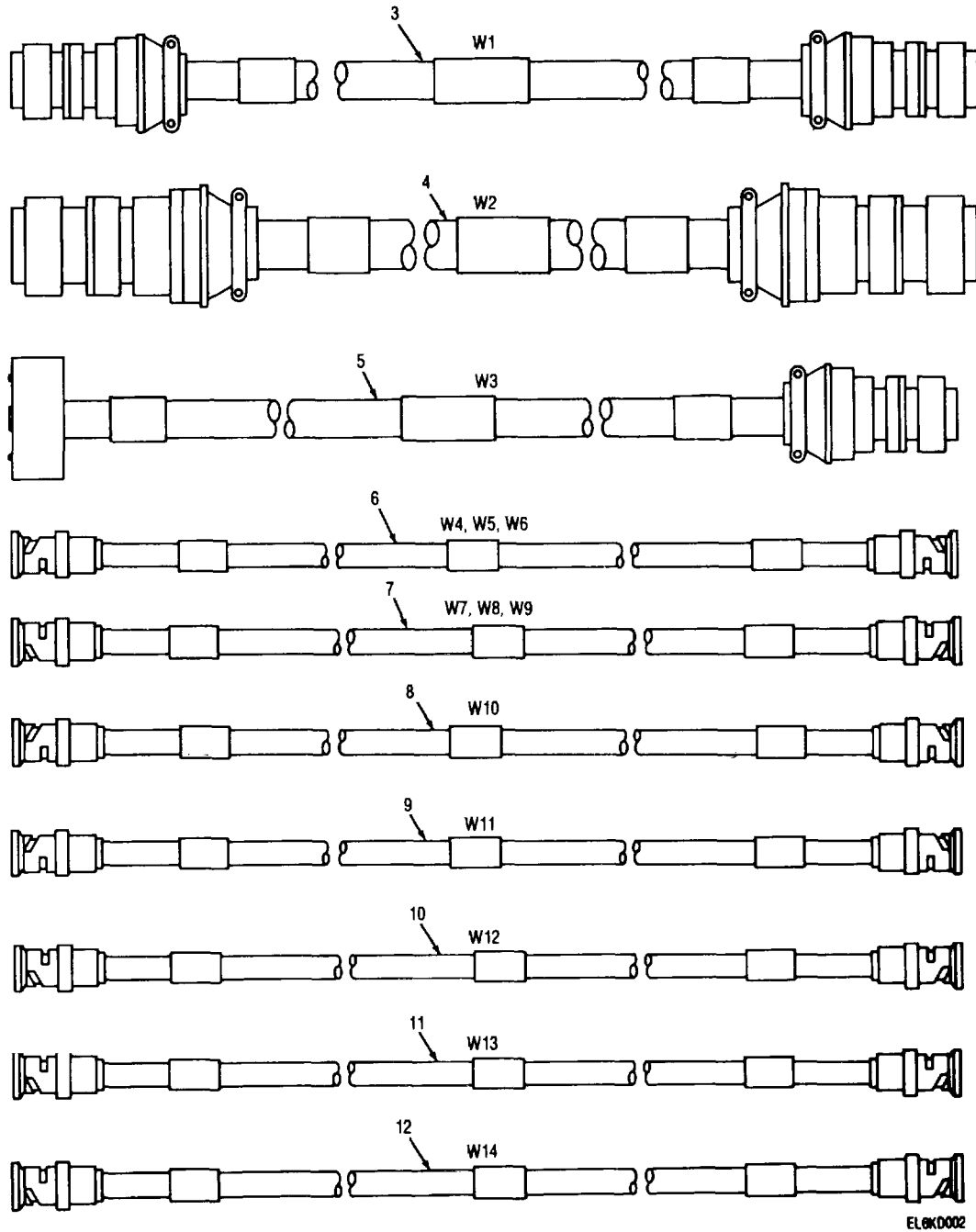
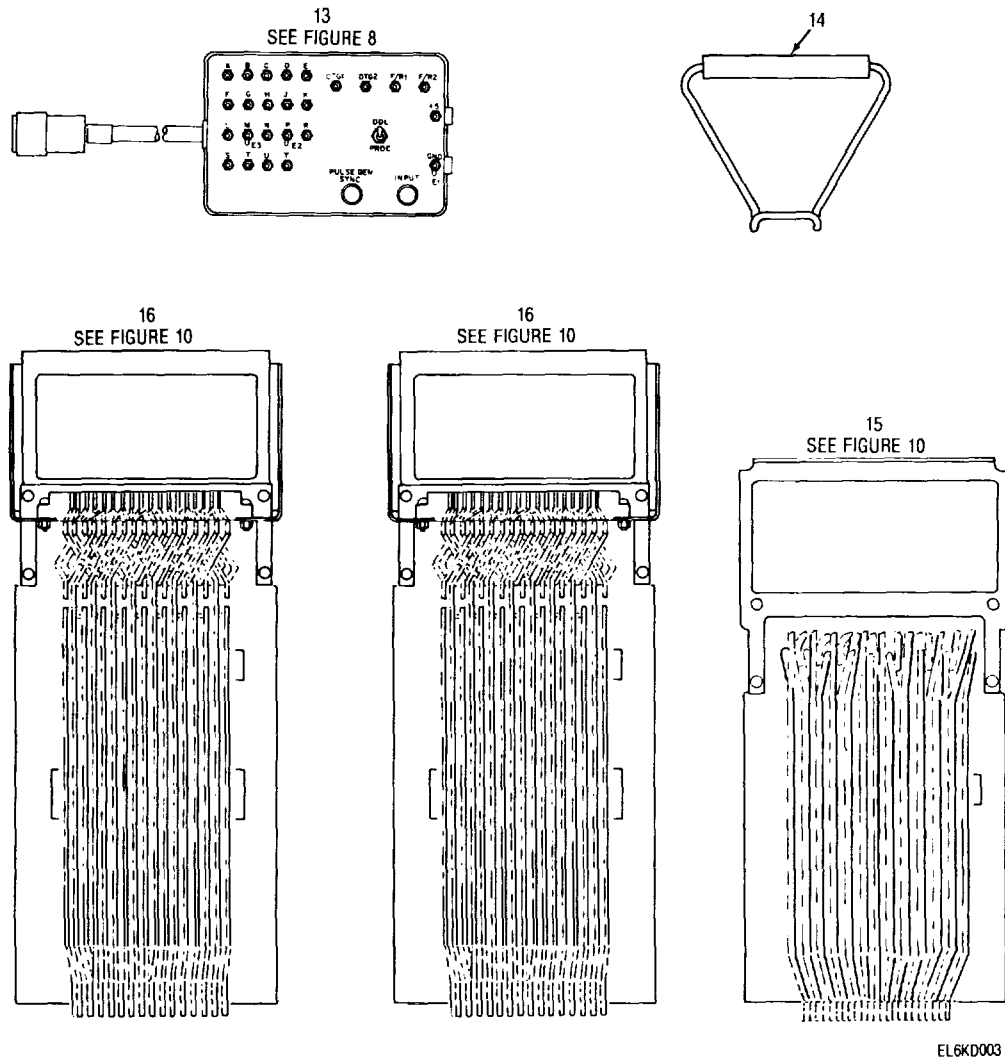


Figure 1. Interface Test, Processor, Radar TS-2973A/APS-94D (sheet2 of3).



EL6KD003

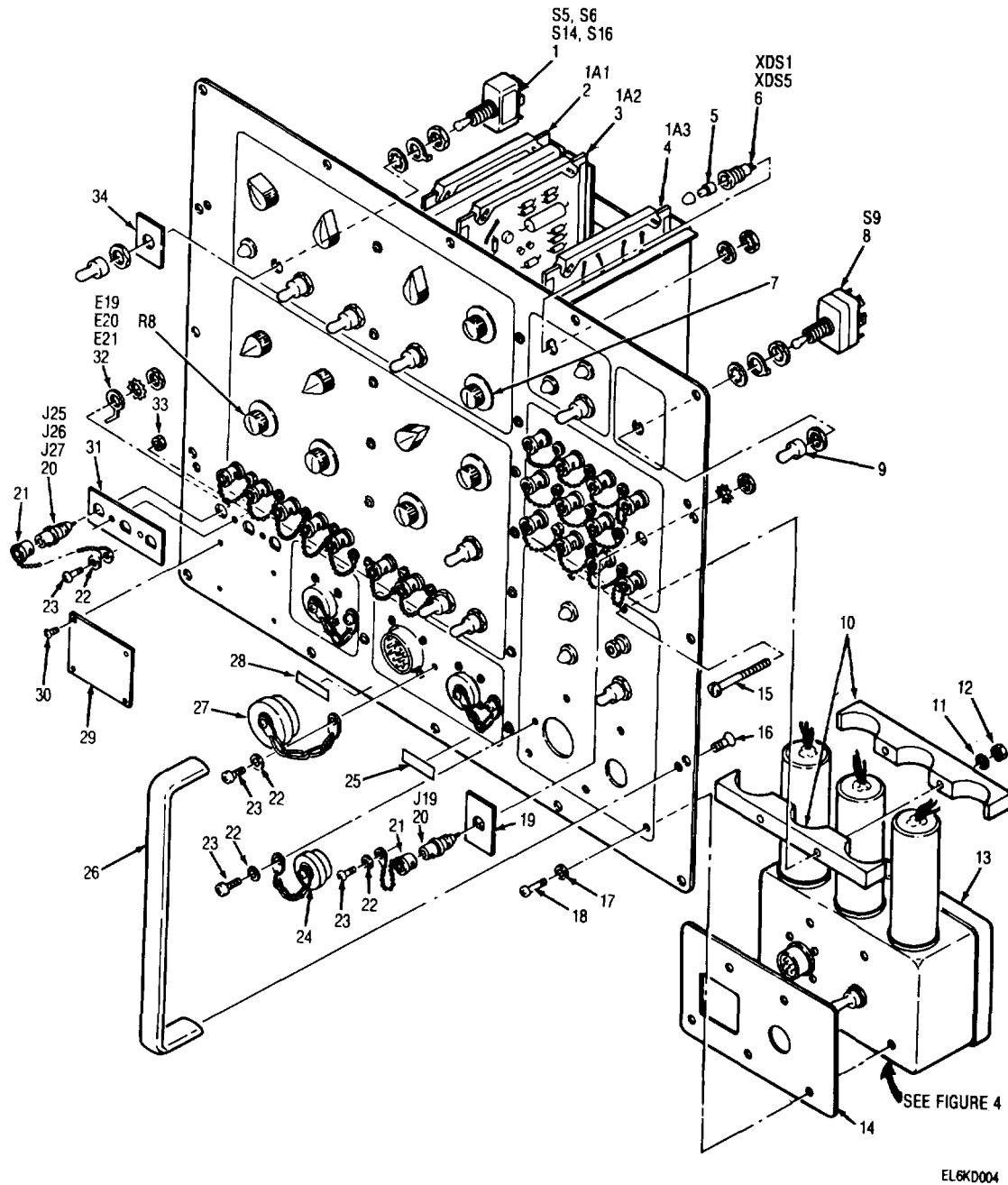
Figure 1. Interface Test, Processor, Radar TS-2973A/APS-94U (Sheet 3 of 3).



SECTION II

TM 11-6625-1831-23P

(1) ILLUSTRATION		(2)	(3)	(4)	(5)	(6)	(7)	(8)
(a) FIG NO.	(b) ITEM NO.	SMR CODE	NATIONAL STOCK NUMBER	FSCM	PART NUMBER	DESCRIPTION  USABLE ON CODE	U/M	QTY INC IN UNIT
						GROUP 00 INTERFACE TEST, PROCESSOR. RADAR TS-2973A/APS-940		
1	1	AFFFF		94990	15-P023458001	CASE TEST SET .....	EA	1
1	2	PAFFF	6625-01-109-1921	94990	01-P01252000L	PANEL, TEST, ELECTRIC .....	EA	1
1	3	PAOFF	6625-00-4890422	80058	CX-12301/U3FT	CABLE ASSEFBLY, SPEC .....	EA	1
1	4	PAOFF	6625-00-489-0421	80058	CX-12306/U3FT	CABLE ASSEMBLY, SPEC .....	EA	1
1	5	PACFF	6625-00-494-6616	E0058	CX-12240/U6FT	CABLE ASSEMBLY, PINE .....	EA	1
1	6	PAOFF	6625-00-493-7479	80058	CG-3618/U3FI	CABLE ASSEMBLY, RADI .....	EA	2
1	7	PAOFF	6625-00-493-7476	80058	CG-3618/U6FT	CABLE ASSEMBLY, RADI .....	EA	3
1	8	PAOFF	5995-01-10-2191	80063	SNA-945671-1	CABLE ASSEPBLY, RADI .....	EA	1
1	9	PAFIZZ	5995-01-106-2L90	80063	S*A-945671-2	CABLE ASSEMBLY, RADI .....	EA	1
1	10	PAOFF	5995-01-106-2189	80063	SM-A-945671-3	CABLE ASSEMBLY RADI .....	EA	1
1	11	PAOFF	5995-01-103-7771	80063	SM-A-945671-4	CABLE ASSEMBLY, RADI .....	EA	1
1	12	PAOFF	5995-01-106-2188	80063	SH-A-945671-5	CABLE ASSELY, RADI .....	EA	1
1	13	PAOFF	6625-01-108-9269	94990	01-P01264NOO1	CUNTROL-MONITOR .....	EA	1
1	14	PAFZZ	584-O1-0170-37Z5	94990	55-P03766B001	CARD EXTRACTOR .....	EA	1
1	15	PAOFF	6625-00-194-2856	80058	MX-8630/APS-940	ADAPTER, TEST .....	EA	1
1	16	PAOFF	6625-00-762-4921	80058	MX-8740/APS-940	ADAPIER, TEST .....	EA	1
					<b>5</b>			



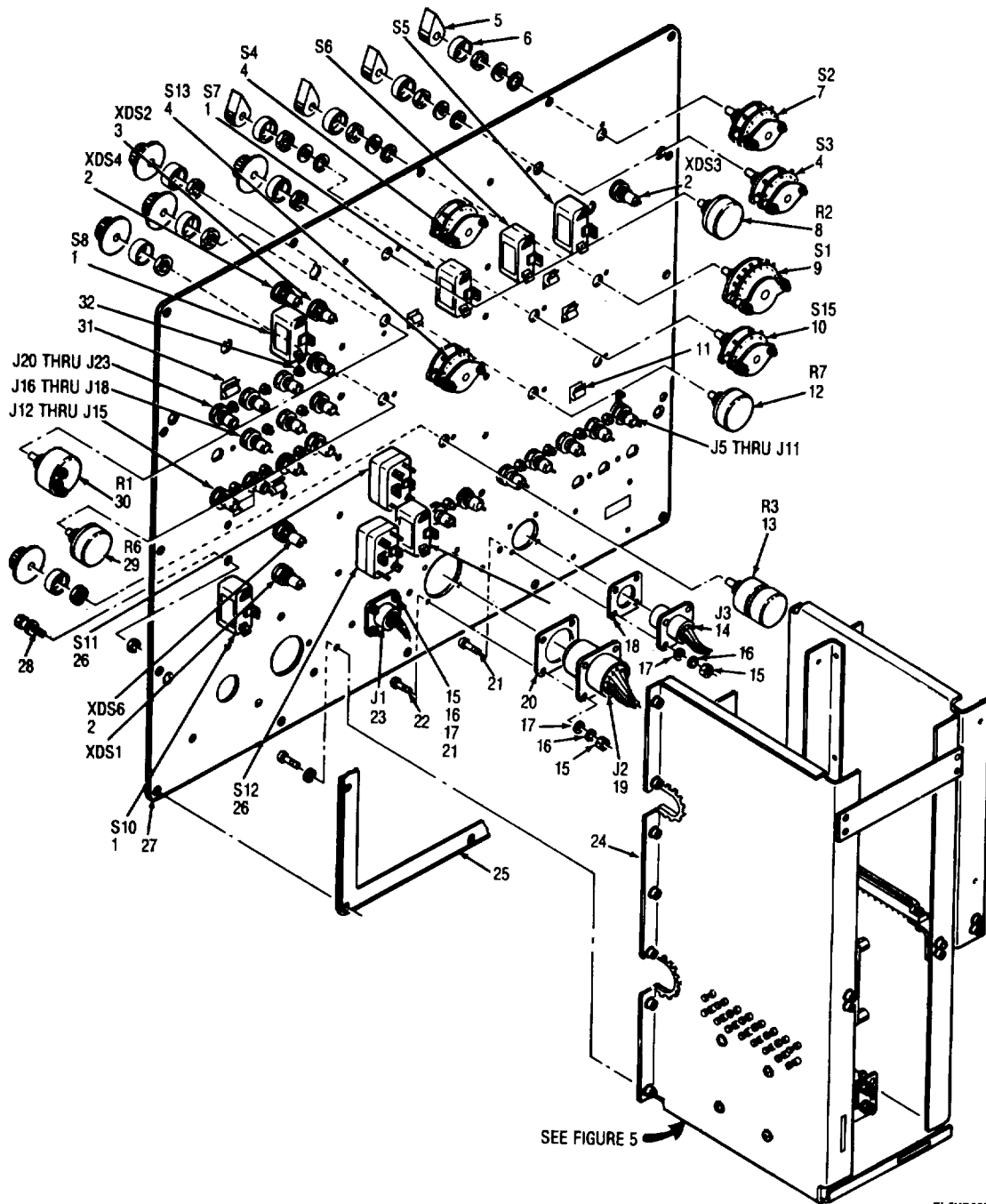
EL6KD004

Figure 2. Panel, Test, Electrical(Front Detail).

SECTION II

TM 11-6625-1831-23P

(1) ILLUSTRATION		(2)	(3)	(4)	(5)	(6)	(7)	(8)
(a) FIG NO.	(b) ITEM NO.	SMR CODE	NATIONAL STOCK NUMBER	FSCM	PART NUMBER	DESCRIPTION  USABLE ON CODE	U/M	QTY INC IN UNIT
						GROUP 01 PANEL, TEST, ELECTRICAL		
2	1	PAFZZ	5930-00-655-1515	96906	NS35058-23	SWITCH, TOGGLE.....	EA	4
2	2	PAFDL	6625-00-439-6144	94990	01-PO30728001	CIRCUIT CARE ASSEMB SEE FIGURE 6.....	EA	1
2	3	PAFDL	6625-00-250-4595	94990	01-PO3077B001	CIRCUIT CARE ASSEMB SEE FIGURE 7.....	EA	1
2	4	PAFDL	6625-00-441-9282	94990	01-P030828001	CIRCUIT CARE ASSEMB SEE FIGURE 8.....	EA	1
2	5	PAOZZ	6240-00-163-7144	96906	NS25231-381	LAMP, INCANDESCENT.....	EA	6
2	6	PAFZZ	6210-00-357-7019	81349	LH731/2LC27GT2	LIGHT, INDICATOR.....	EA	2
2	1	PAOZZ	5355-00-680-1351	96906	NS91521-FZB	KNOB.....	EA	6
2	8	PAFZZ	5930-00-615-7880	96906	MS35059-26	SWITCH, TUGGLE.....	EA	1
2	9	PAFZZ	5930-00-494-4651	S7539	N1O30RF1	BOOT, DUST AND MOIST.....	EA	10
2	10	XDFZZ		94990	42-PO22058001	CLAMP, LOOP.....	EA	1
2	11	PAFZZ	5310-00-933-8L19	96906	MS35338-131	WASHER, LOCK.....	EA	2
2	12	PAFZZ	5310-U0-934-9759	96906	MS35649-284	NUT, PLAIN, HEXAGON.....	EA	2
2	13	XDFFF		94990	01-P02393B001	HOUSING.....	EA	1
2	14	XDFZZ	5999-00-156-7358	94990	32-P023918001	SHIELDING GASKET, EL.....	EA	1
2	15	PAFZZ	5305-00-054-6682	96906	M551957-55	SCREW, MACHINE.....	EA	2
2	16	XDFZZ		96906	MSZ4693-PC271	SCREW, MACHINE.....	EA	4
2	17	PAFZZ	5310-00-680-5978	96906	MNSI5195-801	WASHER, FLAT.....	EA	5
2	18	PAFZZ	5305-00-054-6671	96906	MS51957-46	SCREW, MACHINE.....	EA	5
2	19	XDFZZ		94990	64-PO1263NOOL	PLATE, IDENT.....	EA	1
2	20	PAFZZ	5935-00-853-7596	81349	M390L2-2L-0002	CUNNECTOR; RECEPTAC.....	EA	22
2	21	PAFZZ	5935-00-885-2264	81349	M39012/25-G0006	COVER, ELECTRICAL CO.....	EA	2
2	22	PAFZZ	5310-00-722-5998	96906	MS15195-805	WASHER, FLAT.....	EA	18
2	23	PAFZZ	5305-00-054-6653	96906	MS51957-29	SCREW, MACHINE.....	EA	18
2	24	PAFZZ	5935-00-899-9361	96906	NS3IBI-1L4C	COVER, ELECTRICAL CO.....	EA	2
2	25	XDFZZ		94990	33-P02554B00L	PLATE, INSTRLCTIUON.....	EA	1
2	26	PAFZZ	5340-00-127-0155	94990	55-15041A04	HANDLE; BOW.....	EA	2
2	27	PAFZZ	5935-00-162-1392	96906	MS3181-2OC	COVER, ELECTRICAL CO.....	EA	1
2	28	XOFZZ		94990	33-P171018001	PLATE, IDENT.....	EA	1
2	29	XDFZZ		94990	33-POI262N001	PLATE, IDENT.....	EA	1
2	30	PAFZZ	5305-00-253-5601	96906	M521318-8	SCREW, DRIVE.....	EA	4
2	31	XDFZZ		94990	64-P01257N001	PLATE, IDENT.....	EA	1
2	32	XOFZZ		94990	29-15122A11	TERMINAL, LUG.....	EA	2
2	33	XDFZZ		94990	02-15142A03	NUT, PLAIN, CLINCH.....	EA	2
2	34	XDFZZ		94990	64-PO1256NOO1	PLATE, IDENT.....	EA	1



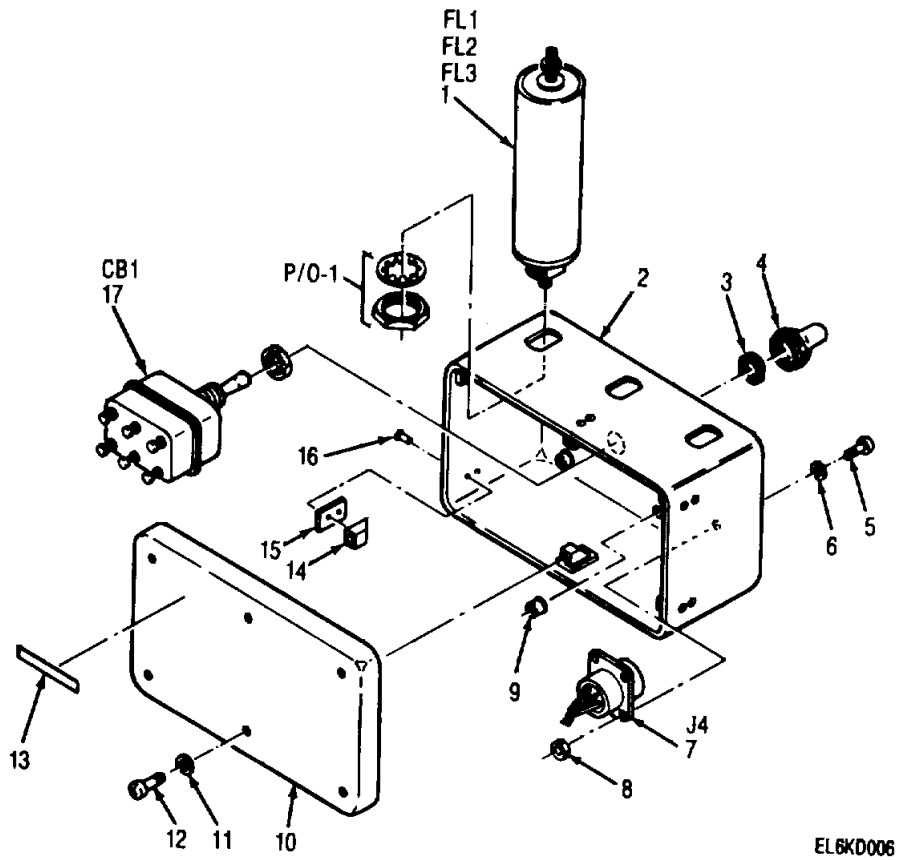
EL6K0005

Figure 3. Panel, Test, Electrical(Rear Detail).

SECTION II

TM 11-6625-1831-23P

(1) ILLUSTRATION		(2)	(3)	(4)	(5)	(6)	(7)	(8)
(a) FIG NO.	(b) ITEM NO.	SMR CODE	NATIONAL STOCK NUMBER	FSCM	PART NUMBER	DESCRIPTION  USABLE ON CODE	U/M	QTY INC IN UNIT
3	1	PAFZZ	5930-00-6S5-1922	96906	N535058-30	SWITCH, TOGGLE.....	EA	3
3	2	PAFZZ	6210-00-183-0453	81349	LH3/2LC2RT2	LIGHT, INDICATOR.....	EA	3
3	3	PAFZZ	6210-00-183-0361	81349	LH3J/1LC27WT2	LIGHT, INDICATOR.....	EA	1
3	4	PAFZZ	5930-00-224-6143	94990	40-P03390BU0	SWITCH.ROTAY .....	EA	2
3	5	PAFZZ	5355-00-556-0145	96906	NS915L28-K28	KNOB .....	EA	6
3	6	PAFZZ	5930-00-491-0714	81349	M5421/09-08	BOOT, DUST AND MOIST .....	EA	12
3	1	PAFZZ		94990	40-P033918003	SWITCH, ROTARY .....	EA	1
3	8	PAFZZ	5905-00-552-2859	81349	RV4NAYSDSOIA	RESISTOR, VARIABLE, N .....	EA	1
3	9	PAFZZ		94990	40-P03393B001	SWITCH, ROTARY.....	EA	1
3	10	XDFZZ		94990	4G-P03392800U	SWITCH, KOTARY .....	EA	1
3	11	XDFZZ		94990	42-P038908001	CLAMP, LOOP .....	EA	2
3	12	PAFZZ	5905-00-556-3041	81349	RY4NAYSUIOLA	RESISTOR, VARIABLE, N .....	EA	1
3	13	PAFZZ		01121	JDIN056i2528A	RESISIOR, VARIABLE,N.....	EA	1
3	14	PAFZZ	5935-00-849-7189	96906	NS3110E14-19S	CONNECTOR, RECEPTACL.....	EA	1
3	15	PAFZZ	5310-00-934-5748	96906	N535649-244	NUT, PLAIN, HEXAGG.....	EA	4
3	16	PAFZZ	5310-00-933-8118	96906	NS35338-135	WASHER, LOCK .....	EA	4
3	17	PAFZZ	5310-00-595-6211	96906	NSS1 59-UO3	WASHERR, FLAT.....	EA	4
3	18	PAFZZ	5999-00-452-1339	94990	32-PO2ZLB003)	SHIELDING GASKET,.EL.....	EA	2
3	19	PAFZZ	5935-00-984-9027	96906	NS311OE20-41SW	CONNECTOR, RECEPTACL .....	EA	1
3	20	XDFZZ		94990	32-PO22218006	SHILD GASKET.ELEK.....	EA	1
3	21	PAFZZ	5305-00-054-5650	96906	NSS1951-16	SCREW, MACHINE .....	EA	4
3	22	PAFZZ	5305-00-054-5651	96906	NN51957-17	SCREW, MACHINE .....	EA	4
3	23	PAFZZ	5935-00-351-0368	96906	SSJLIOEL4-ISSX	CONNECTOR, RECEPTACL.....	EA	1
3	24	XDFZZ		94990	21-PO228O)01	LHASSIS.ELEC EQPT.....	EA	1
3	25	PAFZZ	5999-00-161-9182	94990	32-P021958001	SHIELDING GASKETEL.....	EA	1
3	26	PAFZZ	5930-00-655-1582	96906	NS35059-23	SWITCH, TOGGLE .....	EA	2
3	27	PAFFF	6625-00-938-0219	94990	64-P022028B001	PANEL.TEST, ELECTRIC .....	EA	1
3	28	PAFZZ	5940-00-26-2219	8L349	PBOLFAO4	PUSTBINDING.ELECTRIC.....	EA	1
3	29	PAFZZ	5905-00-552-5478	81349	RV4AYVSO1O2A	RESISTOR,VARIABLE, N .....	EA	2
3	30	PAFZZ		1338	6301RIK	RESISTOR, VARIABLE.N .....	EA	1
3	31	PAFZZ	5340-00-470-6021	06915	KKL-4	CLIP .....	EA	6
3	32	XDFZZ		94990	02-15142A03	NUT,PLAIN.CLINCH.....	EA	26



EL6KD006

Figure 4. Filter Assembly Electrical

SECTION II

TM 11-6625-1831-23P

(1) ILLUSTRATION		(2)	(3)	(4)	(5)	(6)	(7)	(8)
(a) FIG NO.	(b) ITEM NO.	SMR CODE	NATIONAL STOCK NUMBER	FSCM	PART NUMBER	DESCRIPTION  USABLE ON CODE	U/M	QTY INC IN UNIT
4	1	PAFZZ	5915-00-987-4634	81349	M15733/02--0002	FILTER, RADIL FREQUE .....	EA	3
4	2	XDFZZ		94990	15-P02199800I	HOUSING, FILTER .....	EA	1
4	3	XDFZZ		94990	58-P116018001	SEAL, DUST .....	EA	1
4	4	PAFZZ	5930-00-494-4657	97539	1N1030RF1	BOOT, DUST AND, MOIST .....	EA	1
4	5	PAFZZ	5305-00-056-9961	96906	NS24693-PC4	SCREW, MACHINE .....	EA	4
4	6	PAFZZ	5310-00-723-9616	80205	NAS620C4L	WASHER, FLAT .....	EA	4
4	7	PAFZZ	5935-00-086-2368	96906	MS3110E1-SP	CONNECTOR, RECEPTACL .....	EA	1
4	8	PAFZZ	5310-00-807-1471	96906	MS21042-L04	NUT, SELF-LOOKING, EX .....	EA	4
4	9	PAFZZ	5310-00-881-1437	80539	13681-82	NUT, SELF-LOOKING, CL .....	EA:	5
4	10	XDFZZ		94990	15-P02377B001	COVER, ACCESS .....	EA	1
4	11	PAFZZ	5310-00-069-5291	80205	NAS620C8	WASHER, LAT .....	EA	6
4	12	PAFZZ	5305-00-054-6671	96906	MS51957-46	SCREW, NACHIE .....	EA	6
4	13	XDFZZ		94990	33-P06455800	PLATE, INSTRUCTION .....	EA	1
4	14	PAFZZ	5310-00-893-2734	75237	MF6000-08	NUT, SELF-LOOKING, PL .....	EA	6
4	15	XDFZZ		94990	P02199BO11	SPACER, PLAT .....	EA	6
4	16	PAFZZ	5320-00-117-6817	96906	MS20470A03-6	RIVET, SULID .....	EA	12
4	17	PAFZZ	5925-00-871-6476	81349	M39019/05-230	CIRCUIT BREAKER .....	EA	1

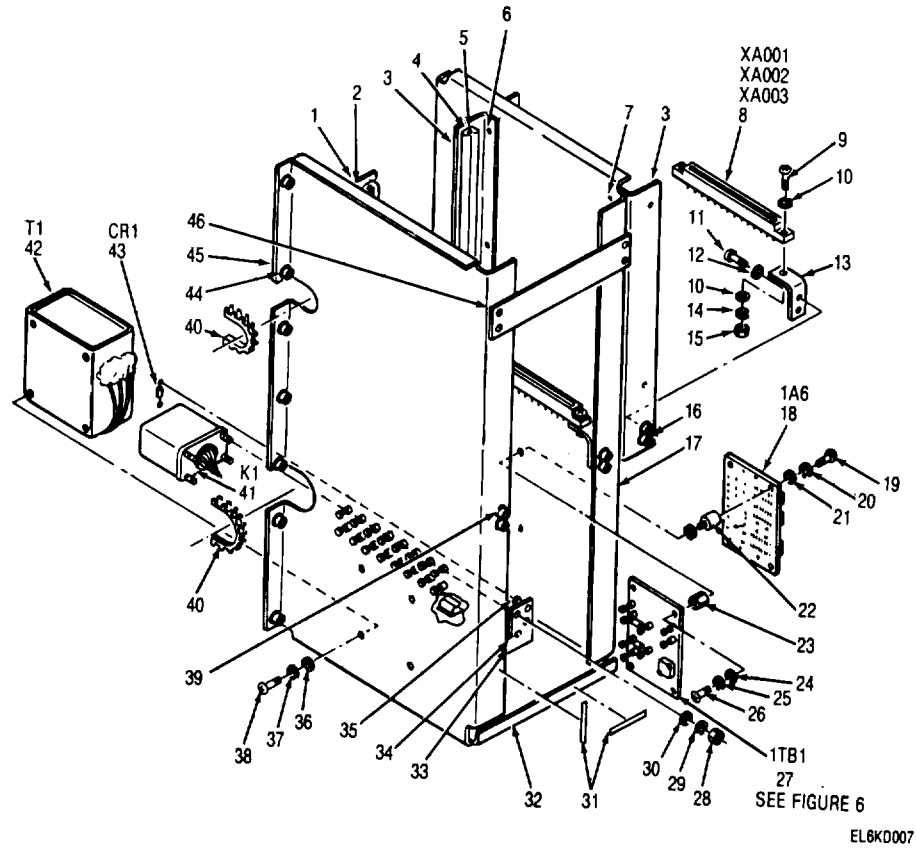


Figure 5. Chassis Assembly Electrical



## SECTION II

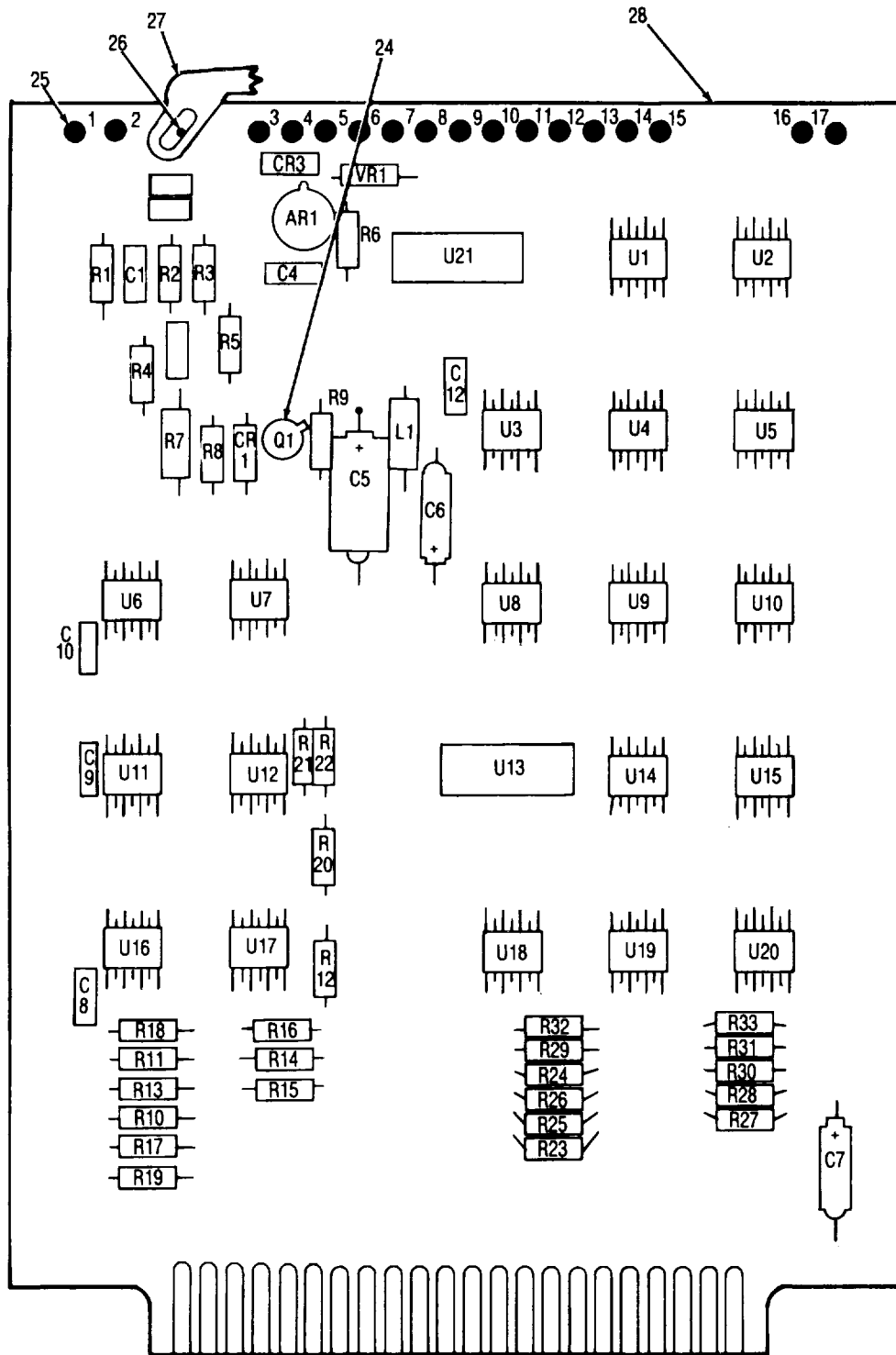
TM 11-6625-1831-23P

(1) ILLUSTRATION		(2)	(3)	(4)	(5)	(6)	(7)	(8)
(a) FIG NO.	(b) ITEM NO.	SMR CODE	NATIONAL STOCK NUMBER	FSCM	PART NUMBER	DESCRIPTION  USABLE ON CODE	U/M	QTY INC IN UNIT
5	1	XAFZZ		94990	07-PO2188002	BRACKET, ANGLE.....	EA	2
5	2	PAFZZ	5320-00-117-6828	96906	NS20470A04-6	RIVET, SOLID .....	EA	6
5	3	XAFZZ		94990	07-P02218B001	BRACK, TANGLE .....	EA	2
5	4	PAFZZ		18915	35-652-12-3	RETAINER CIRCUIT, BO .....	EA	6
5	5	PAFZZ	5320-00-119-6754	96906	NS20470AD02-3	RIVET, SOLID .....	EA	2
5	6	PAFZZ	5320-00-117-6829	96906	NS20410AU04-7	RIVET, SOLID .....	EA	3
5	7	PAFZZ	5320-00-L117-6828	56906	NSZ247CA04-6	RIVET, SOLID .....	EA	6
5	8	PAFZZ	5935-00-355-4919	81349	N21097/21-163	CONNECTOR, REPTACL .....	EA	3
5	9	PAFZZ	5305-00-054-6652	96906	MS51957-18	SCREW, MACHINE .....	EA	12
5	10	PAFZZ	5310-00-595-6211	96906	MS15795-803	WASHER, FLAT .....	EA	12
5	11	PAFZZ	5305-00-054-6653	96906	NS51957-29	SREW, MACHINE .....	EA	12
5	12	PAFZZ	5310-00-722-5998	96906	M515795-805	WASHER, FLAT .....	EA	12
5	13	XDFZZ		94990	07-PO2211B001	BRACKET, ANGLE.....	EA	6
5	14	PAFZZ	5310-00-933-8L118	6906	M535338-135	WASHER, LOCK .....	EA	2
5	15	PAFZZ	5310-J0-934-9748	96906	NS35649-244	NUPLANHEXAGUN.....	EA	12
5	16	XDFZZ		94990	02-15142A03	NUT, PLAIN, CLRCH.....	EA	4
5	17	XDFZZ		94990	27-P022088011	CHASIS, ELEC EQPT .....	EA	1
5	18	PAFDL	6625-C1-106-2316	94990	01-P01253NOU1	CIRCUIT CARD ASSEMB8 SEE FIGURE 10 .....	EA	1
5	19	PAFZZ	5305-00-054-6652	96906	MS51957-28	SCREW, MACHINE .....	EA	4
5	20	PAFZZ	5310-00-929-6395	96906	NS35338-136	WASHER, LOCK .....	EA	4
5	21	PAFZZ	531J-0U-122-5998	96906	MS1S795-05	WASHEK, FLAT .....	EA	4
5	22	PAFZZ		06540	9139-A-0632	POST, ELEC, -EQPT.....	EA	4
5	23	XDFZZ		94990	43-15054AZ8	SPACER, SLEEVE .....	EA	4
5	24	PAFZZ	531U-00-929-6395	96906	MS35J33--36	WASHER, LOCK .....	EA	4
5	25	PAFZZ	5310-00-r22-5998	96906	MS15795-805	WASHER, FLAT .....	EA	4
5	26	PAFZZ	5305-0C-54-6654	96906	MSS951L-30	SCREW, MACHINE .....	EA	4
5	27	AFFFF		94990	01-P02401B001	ELEK CMPNT ASSEMBLY .....	EA	1
5	28	PAFZZ	5310-00-534-9761	96906	MS35649-264	NUT, PLAIN, EXAGON.....	EA	4
5	29	PAFZZ	5310-00-929-6395	96906	MS35338-136	WASHER, LOCK .....	EA	4
5	30	PAFZZ	5310-00-722-5998	96906	MS15795-805	WASHER, FLAT .....	EA	4
5	31	XDFZZ		94990	33-P06455B001	PLATE, INTRUCTIONS .....	EA	3
5	32	XAFZZ		94990	27-P02208B012	CHASSIS, ELEC EQPT .....	EA	1
5	35	XAFZZ		94990	07-P02197B001	BRACKET, ANGLE.....	EA	1
5	34	PAFZZ	5320-00U-11-6828	96906	NSZU470ADr-6	RIVET, SOLID .....	EA	1
5	35	PAFZZ	5940-0810-6269	98291	STSN29TURP41	TERMINAL, STUD .....	EA	2
5	36	PAFZZ	5310-00-929-6395	96906	MS35338-136	WASHER, LOCK .....	EA	4
5	37	PAFZZ	5310-00-722Z-5998	96906	MS15795-805	WASHER, FLAT .....	EA	4
5	38	PAFZZ	530S-CO-054-6653	96906	MS51957-29	SCREW, MACHINE .....	EA	4
5	39	XDFZZ		4990	02-1542A03	NUT, PLAIN, CLINCH.....	EA	2
5	40	PAFZZ	5325-00-074-3301	96906	MS21266-2N	GROMMET, NONMETALLIC.....	EA	12

SECTION II

TM 11-6625-1831-23P

(1) ILLUSTRATION		(2)	(3)	(4)	(5)	(6)	(7)	(8)
(a) FIG NO.	(b) ITEM NO.	SMR CODE	NATIONAL STOCK NUMBER	FSCM	PART NUMBER	DESCRIPTION  USABLE ON CODE	U/M	QTY INC IN UNIT
5	41	PAFZZ	5945-00-950-4237	96906	S25261D	RELAY, ELECT, MAGET .....	EA	1
5	42	PAFZZ	5950-00-224-6130	94990	24-P02215B00L	TRANSFORMER, ELECTRI .....	EA	1
5	43	PAFZZ	5961-00-957-6865	81349	JANIN3611	SEMICONDUCTOR,DEVIC .....	EA	1
5	44	XDFZZ		94990	02-14166AO3	NUF, PLAIN, CLINCH .....	EA	14
5	45	XAFZZ		94990	27-P0208010	CHASSIS, ELEC, EQPT .....	EA	1
5	46	XDFZZ		94990	27-POZ2088013	STRAP, TIEDOWN .....	EA	1
14/(15 BLANK)								



REF DES	ITEM NO.	REF DES	ITEM NO.
AR1	1	U9	20
C1	2	U10	20
C2	2	U11	21
C3	2	U12	21
C4	2	U14	18
C5	3	U15	20
C6	4	U16	21
C7	4	U17	21
C8	2	U18	21
C9	2	U19	21
C10	2	U21	22
C11	2	VR1	23
C12	2		
C13	5		
C14	6		
CR1	7		
CR2	7		
CR3	7		
L1	8		
Q1	9		
R1	10		
R2	11		
R3	10		
R4	11		
R5	12		
R6	13		
R7	14		
R8	11		
R9	11		
R10	10		
R11	10		
R12	10		
R13	10		
R14	10		
R15	10		
R16	10		
R17	10		
R18	10		
R19	10		
R20	10		
R21	10		
R22	10		
R23	10		
R24	10		
R25	10		
R26	10		
R27	10		
R28	10		
R29	10		
R30	10		
R31	10		
R32	10		
R33	10		
R34	15		
U1	16		
U3	17		
U4	16		
U5	16		
U6	18		
U7	19		
U8	20		

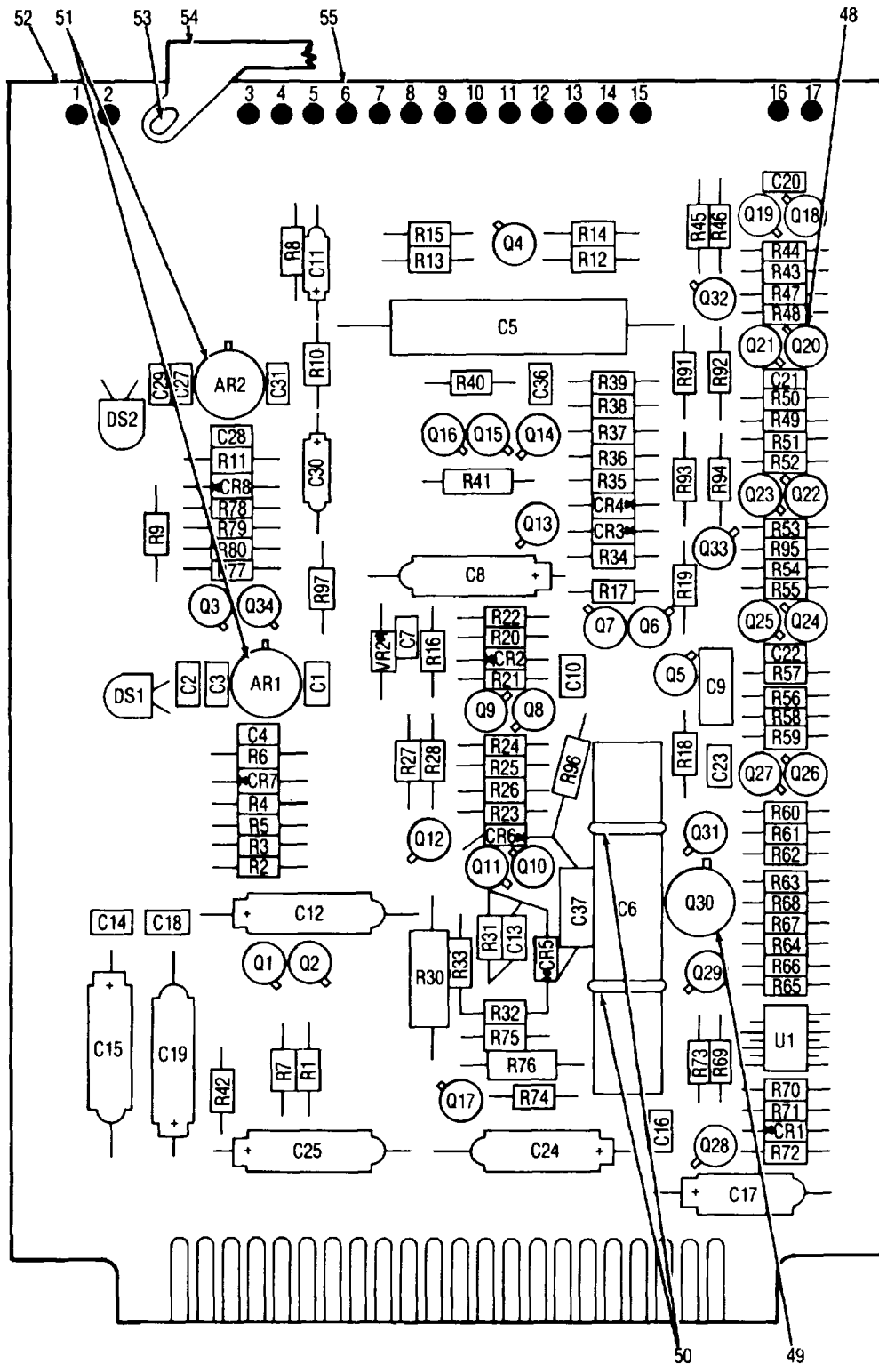
EL6KD006

Figure 6. Clock and Counter Module 1A1

SECTION II

TM 11-6625-1831-23P

(1) ILLUSTRATION		(2)	(3)	(4)	(5)	(6)	(7)	(8)
(a) FIG NO.	(b) ITEM NO.	SMR CODE	NATIONAL STOCK NUMBER	FSCM	PART NUMBER	DESCRIPTION  USABLE ON CODE	U/M	QTY INC IN UNIT
						GROUP 0101 CLOCK AND COUNTER MODULE 1A1		
6	1	PADZZ	5962-00-111-4319	04713	RC171OG	MICROCIRCUIT, DIGITA.....	EA	1
6	2	PADOZ	5910-00-010-8718	81349	M39014/02-1338	CAPACITUR, FIXED, CER .....	EA	9
6	3	PAUZZ	5910-00-144-4383	81349	M39003-01-3026	LAPACITOR.FIXED, ELE .....	EA	1
6	4	PADZZ	5910-00-189-4248	E1349	CSR13C336KL	CAPACITOR, FIXED, .ELE .....	EA	2
6	5	XDDZZ	5910-00-091-8057	81349	CM04FDLOIUJ03	CAPACITOR, FIXED, MIC .....	EA	1
6	6	PADZZ	5910-01-058-9985	81349	CMR04F331GOAR	CAPACITOR, FIXU, MIC.....	EA	1
6	7	PADZZ	5961-00-842-9854	81149	JANIN9L4	SEMICONDUCTOR FUEL .....	EA	3
6	8	PADZZ	5950-00-943-91L4	96906	MS7T088-7	COIL, RADIO, FRECUENC .....	EA	1
6	9	PADZZ	5961-00-926-0237	81349	JANZN2369A	TRANSITOR .....	EA	1
6	10	PADZZ	5905-00-105-7764	81349	RCROIG222JS	RESISTOR, FIXED, DUMP .....	EA	26
6	11	PADZZ	5905-00-110-7620	1349	RCRO6102JS	RESISTOR, FIXED,COMP .....	EA	4
6	12	PADZZ	5905-00-106-3668	81349	RCRU7G22OJS	RESISTOR, FIXED COMP .....	EA	1
6	13	PADZZ	5905-00-114-5343	81349	RCROGI82JS	RESISTOR, FIXED.COMP .....	EA	1
6	14	PADZZ	5905-00-106-9344	81349	RRCRZOGIO1JS	RESISTOR, FIXED, COMP .....	EA	1
6	15	PADZZ	5905-00-76T-5158	81349	RCROSG4J1JS	RESISTOR, FIXED, COMP .....	EA	1
6	16	PADZZ	5962-00-349-8844	18324	C6177J	MICROCIRCUIT, DIGITA.....	EA	3
6	17	XDDZZ		18324	S8816J	MICROCIRCUIT, DIGITA.....	EA	1
6	18	PADZZ	5962-00-453-7659	18324	S8855J	MICROCIRCUIT, DIGITA.....	EA	1
6	19	XDDZZ		18324	SU24	MICROCIRCUIT, DIGITA.....	EA	2
6	20	PADZZ	5962-00-430-7301	18324	S881SJ	MICROCIRCUIT, DIGITIA .....	EA	1
6	21	PADZZ	5962-00-361-8646	81349	M38510/00206BU	MICRROCIRCUIT.DIGITA .....	EA	4
6	22	XDDZZ		01263	U6893OSIX	MICROCIRCUIT, DIGITA.....	EA	1
6	23	PADZZ	5961-00-845-6458	81349	JAN1N756A	SEMICONDUCTOR , DEVIC .....	EA	1
6	24	XDDZZ	5999-00-929-3086	80063	SM-A-02426-10	MTG PAD, ELEC-ELEK .....	EA	1
6	25	XDDZZ	5940-00-082-4689	81349	SEL2XCOL	TERMINAL, STUD .....	EA	5
6	26	XDDZZ	5315-00-550-5011	96906	Ri16562-200	PIN, SPRING .....	EA	2
6	27	XDDZZ	5340-00-480-6143	94990	55-PO30191B001	HANDLE, BOW .....	EA	1
6	28	XDDZZ		94990	84-P00738001	PWB .....	EA	1



REF DES	ITEM NO.	REF DES	ITEM NO.	REF DES	ITEM NO.
AR1	1	Q21	14	R51	30
AR2	1	Q22	14	R52	41
C1	2	Q23	14	R53	28
C2	2	Q24	14	R54	30
C3	3	Q25	14	R55	26
C4	3	Q26	14	R56	42
C5	4	Q27	14	R57	28
C6	4	Q28	17	R58	30
C7	5	Q29	15	R59	41
C8	6	Q30	19	R60	38
C9	7	Q31	18	R61	43
C10	5	Q32	14	R62	38
C11	8	Q33	14	R63	26
C12	6	Q34	15	R64	38
C13	5	R1	20	R65	24
C14	5	R2	21	R66	38
C15	9	R3	21	R67	31
C16	5	R4	22	R68	26
C17	10	R5	23	R69	26
C18	5	R6	24	R70	26
C19	10	R7	25	R71	43
C20	5	R8	26	R72	38
C21	5	R9	25	R73	26
C22	5	R10	26	R74	26
C23	5	R11	24	R75	24
C24	6	R12	24	R76	44
C27	3	R13	27	R77	21
C28	3	R14	38	R78	22
C29	2	R16	38	R79	23
C30	8	R17	30	R80	21
C31	2	R18	31	R91	30
C37	11	R19	31	R92	30
CR1	12	R20	32	R93	30
CR2	12	R21	33	R94	30
CR3	12	R22	31	R95	45
CR4	12	R23	26	R96	24
CR5	12	R24	26	R97	24
CR6	12	R25	24	V1	46
CR7	12	R26	24	VR2	47
CR8	12	R28	34		
DS1	13	R29	35		
DS2	13	R30	36		
Q1	14	R31	37		
Q2	15	R32	22		
Q3	14	R33	25		
Q4	16	R34	38		
Q5	17	R35	24		
Q6	17	R36	38		
Q7	17	R37	26		
Q8	17	R38	39		
Q9	17	R39	26		
Q10	17	R40	31		
Q11	14	R41	40		
Q12	14	R42	26		
Q13	18	R43	30		
Q14	18	R44	41		
Q15	14	R45	30		
Q16	15	R46	28		
Q17	14	R47	30		
Q18	14	R48	41		
Q19	14	R49	30		
Q20	14	R50	28		

EL6KD004

Figure 7. Oscillator and Switch Module 1A2

(1) ILLUSTRATION		(2)	(3)	(4)	(5)	(6)	(7)	(8)
(a) FIG NO.	(b) ITEM NO.	SMR CODE	NATIONAL STOCK NUMBER	FSCM	PART NUMBER	DESCRIPTION  USABLE ON CODE	U/M	QTY INC IN UNIT
						GROUP 0102 OSCILLATOR AND SWITCH  MODULE 1A2		
7	1	PADZZ	5962-00-481-8112	C47L3	CL52OG	MICROCIRCUIT, LINEAR.....	EA	2
7	2	PADZZ	5910-00-1L3-5499	81349	M39014/02-1350	CAPACITUR, FIXED, CER.....	EA	4
7	3	PADIZ	59L0-01-059-6527	L349	CHROCIO0D000	CAPACITOR, FIXED, MIC.....	EA	4
7	4	XDDZZ		81349	CL33BD0550NE	CAPALITUR, FIXED, ELE.....	EA	2
7	5	PADZZ	5910-00-010-8718	81349	N39014/02-1338	CAPACITOR, FIXED CLER.....	EA	10
7	6	PADZZ	5910-00-412-9235	81349	M39003/01-2911	CAPACITOR, FIXED, ELE.....	EA	3
7	7	PADZZ	5910-00-460-0868	81349	CMOSFFLOJ03	CAPACITOR, FIXED, MIC.....	EA	1
7	8	PADIZ	5910-00-007-2000	81349	M39003-01-2962	CAPACITOR, FIXED, ELE.....	EA	2
7	9	PADZZ	5910-00-144-4383	81349	M3900.-01-3026	CAPACITUR, FIXED, ELE.....	EA	1
7	10	PADZZ	5910-00-189-4248	81349	CSR3C336KL	CAPACITUR, FIXD, ELE.....	EA	8
7	11	XDDZZ	5910-00-764-2758	81L349	CN04C0050003	CAPACITOR, FIXED, MIC.....	EA	1
7	12	PADZZ	5910-00-938-1135	81349	JANN4148	SEMICONDUCTOR DEVIC.....	EA	8
7	13	PADZZ	6240-00-905-6050	111744	CN2158	LAMP, INCANDESCENT.....	EA	2
7	14	PADZZ	5961-00-226-8584	81349	JANZN2222	TRANSISTOR.....	EA	18
7	15	PADZZ	5961-00-925-3177	81349	JAN2N2907A	TRASISTOR.....	EA	4
7	16	PADZZ	5961-00-104-84Z6	81349	JAN2NJSZ3	TRANSISTOR.....	EA	1
7	17	PADZZ	5961-00-926-0237	81349	JAN2NZ369A	TRANSISTOR.....	EA	7
7	18	PADZZ	5961-00-911-6015	81349	JAN2N325IA	TRANSISTOR.....	EA	2
7	19	PADZZ	5961-00-104-9898	81349	JAN2N3506	TRANSISTOR.....	EA	1
7	20	PADZZ	5905-00-119-3503	81349	RCROT.271JS	RESISTUR, FIXED, COMP.....	EA	1
7	21	PADZZ	5905-00-113-4861	81349	RCRO7G390JS	RESISTOR FIXED, COMP.....	EA	4
7	22	PADZZ	5905-00-105-7768	81349	RCROTG561JS	RESISTOR FIXED, COMP.....	EA	3
7	23	PADZZ	5905-00-141-0743	81349	RCR07G392JS	RESISTOR, FIXED, COMP.....	EA	2
7	24	PADZZ	5905-00-110-7620	81349	RCROTGIOZJS	RESISTOR, FIXED, COMP.....	EA	10
7	25	PADZZ	5905-00-104-8363	81349	RCRO7G820JS	RESISTOR, FIXEG, COMP.....	EA	3
7	26	PADZZ	5905-00-105-7164		RCR07G22JS	RESISTOR, FIXED, COMP.....	EA	14
7	27	PADZZ	5905-00-115-8055	81349	RCRO7G393JS	RESISTOR, FIXED, COMP.....	EA	1
7	28	PADZZ	5905-00-106-3666	81349	RCR07TG1O3JS	RESISTOR, FIXED, COMP.....	EA	2
7	29	PAOZZ	5905-00-135-3975	81349	RCRO7G66OJS	RESISTOR, FIXED, COMP.....	EA	1
7	30	PADZZ	5905-00-114-0111	81349	RCROT1472JS	RLSISTOR, FIXED, COMP.....	EA	12
7	31	PADZZ	5905-00-141-1183	81349	RCROTGLOIJS	RESISTOR, FIXED, COMP.....	EA	5
7	32	PADZZ	5905-00-106-1356	81349	RCRO0G152JS	RESISTOR, FIXED, COMP.....	EA	1
7	33	PADZZ	5905-00-13S-6046	81349	RCRO7G681JS	RESISTOR, FIIXED, COMP.....	EA	1
7	34	PADZZ	5905-00-114-5344	81349	RCRO7G184JS	RESISTOR, FIXED, COMP.....	EA	1
7	35	PADZZ	5905-00-115-3560	81349	RCRO7G18L3JS	RESISTOR, FIXED, COMP.....	EA	1
7	36	PADZZ	5905-00-454-2875	81349	RRCR32G18OJS	RESISTOR, FIXED, COMP.....	EA	1
7	37	PADZZ	5905-00-131-1255	81349	RCROTGI22JS	RESISTOR, FIXED, COMP.....	EA	1
7	38	PADZZ	5905-00-111-4721	81349	RCRO1G272JS	RESISTOR, FIXED, COMP.....	EA	7

SECTION II

TM 11-6625-1831-23P

(1) ILLUSTRATION		(2)	(3)	(4)	(5)	(6)	(7)	(8)
(a) FIG NO.	(b) ITEM NO.	SMR CODE	NATIONAL STOCK NUMBER	FSCM	PART NUMBER	DESCRIPTION  USABLE ON CODE	U/M	QTY INC IN UNIT
7	39	PADZZ	5905-00-121-9932	81349	RCR7TG39IJS	RESISTOR, FIXED, COMP .....	EA	1
7	40	PADZZ	5905-00-114-5381	81349	RCR20C180JS	RESISIOR, FIXED, COMP.....	EA	1
7	41	PADZZ	5905-00-118-4559	81349	RCRU1G3J3JS	RESISTOA.FIXED.COMP.....	EA	4
7	42	PADZZ	5905-00-116-5343	81349	RCR07G182J\$	RESISTOR, FIXED, COMP .....	EA	1
7	43	PADZZ	5905-00-119-8168	81349	RCRO7G82LJS	RESISTOR, FIXED, COMP .....	EA	2
7	44	PADZZ	5905-00-106-9344	81349	RCRZO20OLJS	RESISTOR, FIXED,COMP .....	EA	1
7	45	PADZZ	5905-00-116-8555	81349	RCRO1153JS	RESISTOR, FIXED, COMP .....	EA	1
7	46	PADZZ	5961-00-349-8844	18324	C6L17J	MICROCIRCUIT, DIGITA.....	EA	1
7	47	PADZZ	5961-00-847-5246	81349	JAN1N746A	SEMICONDUCTOR ,DEVIC .....	EA	1
7	48	XDDZZ	5999-00-929-3086	80063	SN-A-7042Z6-10	NIG PAD, ELEC-ELEK .....	EA	33
7	49	XDDZZ	5999-00-106-3926	80063	SN-A-702426-1	MTG PAO, ELEC-ELEK.....	EA	1
7	50	XDDZZ		80063	SN-A-70199b-2	STRAP, TIEDCWN, ELEC.....	EA	2
7	51	XDDZZ		80063	SM-A-7C2426-3	MTG PAD, ELEC-ELEK.....	EA	2
7	52	XDDZZ	594-0-00-02-4869	81349	SE12XCO	TERMINAL, STUD.....	EA	5
7	53	XDDZZ	5315-00-550-5011	56906	NS16562-200	PIN.SPRING.....	EA	2
7	54	XDDZZ	5340-00-480-6143	94990	55-P021918001	HANOLE.BOW .....	EA	1
7	55	XDDZZ		94990	84-P030788001	PWB .....	EA	1
20/(21 BLANK)								

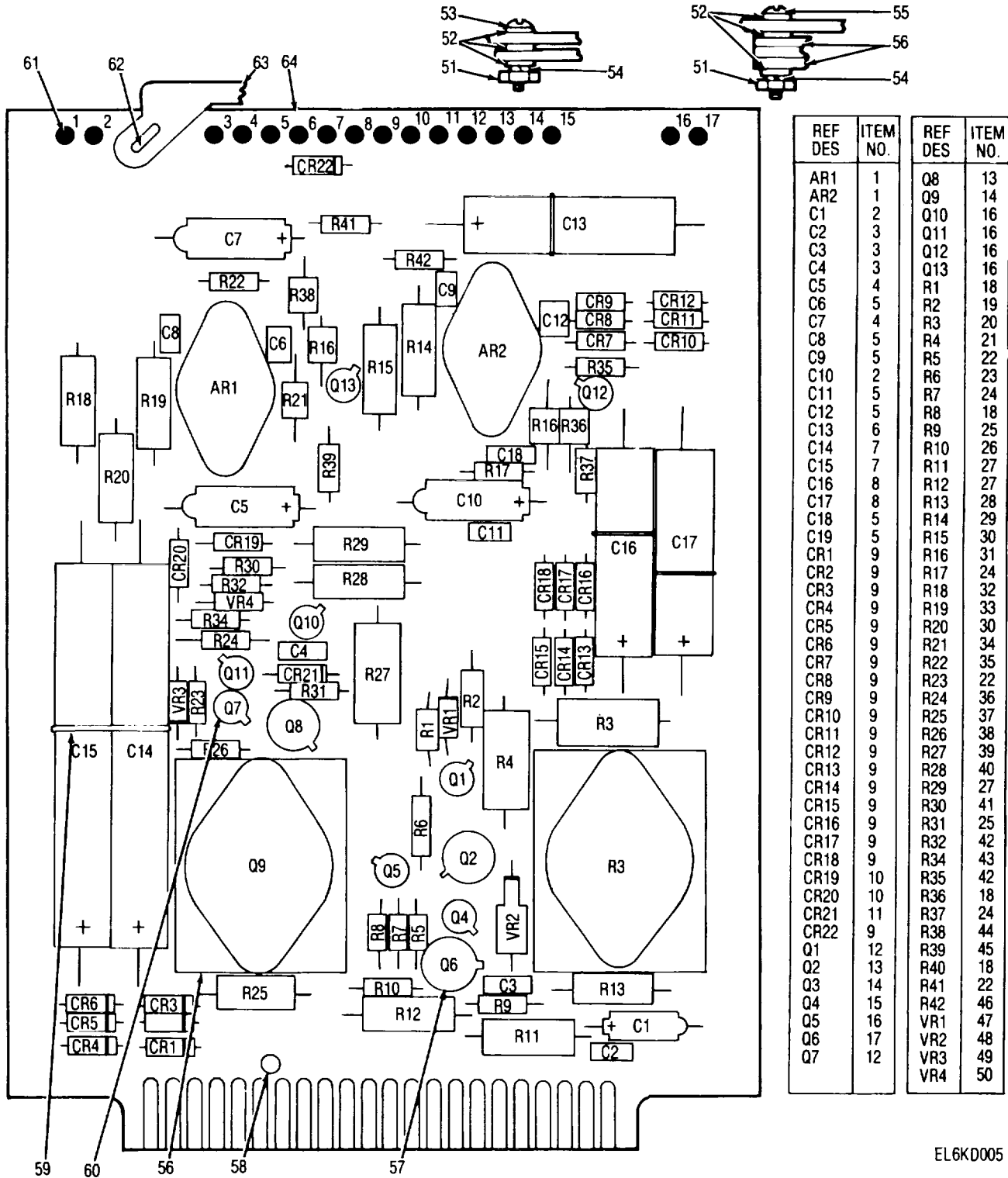


Figure 8. Power Supply Regulator Module 1A3



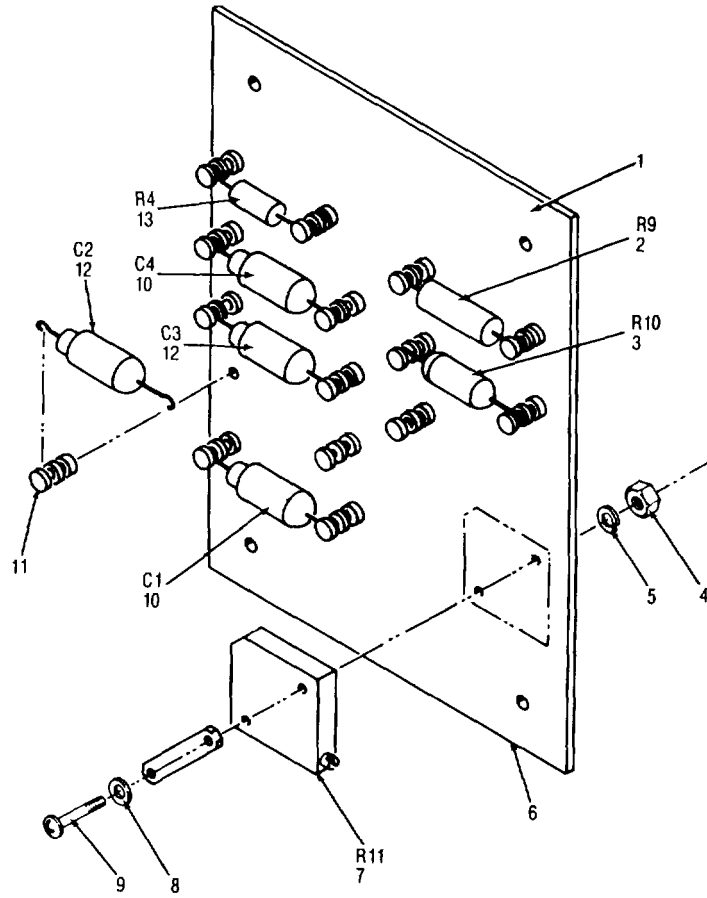
(1) ILLUSTRATION		(2)	(3)	(4)	(5)	(6)	(7)	(8)
(a) FIG NO.	(b) ITEM NO.	SMR CODE	NATIONAL STOCK NUMBER	FSCM	PART NUMBER	DESCRIPTION  USABLE ON CODE	U/M	QTY INC IN UNIT
						GROUP 0103 POWER SUPPLY REGULATOR  MODULE 1A3		
8	1	PADZZ	5962-00-401-7814	04713	MC1561R	MICROCIRCUIT, LINEAR.....	EA	2
8	2	PADZZ	5910-00-189-4248	81349	CSR13C336KL	CAPACITOR, FIXD, ELE.....	EA	2
8	3	PADZZ	5910-00-010-8718	81349	M39014/02-1338	CAPACITOR, FIXED, CER.....	EA	3
8	4	PAOZZ	5910-00-154-0547	81349	N39003-01-3032	CAPACITOR, FIXED, ELE.....	EA	2
8	5	PADZZ	5910-00-113-5499	81349	M39014/02-1350	CAPACITOR, FIXED, CER.....	EA	7
8	6	XDDZZ	5910-00-933-0127	81349	CL21BJ600TPE	CAPACITOR, FIXED, ELE.....	EA	1
8	7	XDDZZ	5910-00-111-1693	81349	CL21BJ151TPE	CAPACITOR, FIXED, ELE.....	EA	2
8	8	XDDZZ		81349	CL218G121UPE	CAPACITOR, FIXED, ELE.....	EA	2
8	9	PADZZ	5961-00-951-6865	81349	JAN1N3611	SEMICONDUCTOR DEVIC.....	EA	19
8	10	PADZZ	5961-00-842-9864	81349	JAN1N914	SEMICONDUCTOR DEVIC.....	EA	2
8	11	PADZZ		81349	JAN1N276	SEMICONDUCTOR DEVIC.....	EA	1
8	12	PADZZ	5961-00-925-3771	81349	JAN2N2907A	TRANSISTOR.....	EA	2
8	13	PADZZ	5961-00-949-1432	81349	JAN2N2219A	TRANSISTOR.....	EA	2
8	14	PADZZ	5961-00-448-9389	81349	JAN2N3715	TRANSISTOR.....	EA	2
8	15	PADZZ	5961-00-911-6015	81349	JAN2N3251A	TRANSISTOR.....	EA	1
8	16	PADZZ	5961-00-226-8584	81349	JAN2N2222	TRANSISTOR.....	EA	5
8	17	PADZZ	5961-00-765-4589	81349	JAN2N2060	SEMICONDUCTOR DEVIC.....	EA	1
8	18	PADZZ	5905-00-114-0711	81349	RCR07G472JS	RESISTOR, FIXED, COMP.....	EA	4
8	19	PADZZ	5905-00-110-0310	81349	RCR20G392JS	RESISTOR, FIXED, COMP.....	EA	1
8	20	PADZZ	5905-00-060-3131	81349	RW69V1R0	RESISTOR, FIXED, WIRE.....	EA	1
8	21	PADZZ	5905-00-477-1637	81349	RCR42G270JS	RESISTOR, FIXED, COMP.....	EA	1
8	22	PADZZ	5905-00-110-7620	81349	RCR07G102JS	RESISTOR, FIXED, COMP.....	EA	3
8	23	PADZZ	5905-00-104-8348	81349	RCR20G332JS	RESISTOR, FIXED, COMP.....	EA	1
8	24	PADZZ	5905-00-105-7764	81349	RCR07G222JS	RESISTOR, FIXED, COMP.....	EA	3
8	25	PADZZ	5905-00-107-0656	81349	RCR07G100JS	RESISTOR, FIXED, COMP.....	EA	2
8	26	PADZZ	5905-00-121-9932	81349	RCR07G391JS	RESISTOR, FIXED, COMP.....	EA	1
8	27	PADZZ	5905-00-83-5814	81349	RN65C1241F	RESISTOR, FIXED, FILM.....	EA	2
8	28	PADZZ	5905-00-247-8732	81349	RCR32G471JS	RESISTOR, FIXED, COMP.....	EA	1
8	29	XDDZZ		81349	RN65C3161F	RESISTOR, FIXED, FILM.....	EA	1
8	30	PADZZ	5905-00-835-6675	81349	RN65C6811F	RESISTOR, FIXED, FILM.....	EA	2
8	31	PADZZ	5905-00-111-4852	81349	RCR20G2R7JS	RESISTOR, FIXED, COMP.....	EA	1
8	32	PADZZ	5905-00-062-2291	81349	RN65C9092F	RESISTOR, FIXED, FILM.....	EA	1
8	33	PADZZ		81349	RN65C5112F	RESISTOR, FIXED, FILM.....	EA	1
8	34	PADZZ		81349	RW81U1R82F	RESISTOR, FIXED, WIRE.....	EA	1
8	35	PADZZ	5905-00-110-0196	81349	RCR20G102JS	RESISTOR, FIXED, COMP.....	EA	1
8	36	PADZZ	5905-00-141-1130	81349	RCR20G272JS	RESISTOR, FIXED, COMP.....	EA	1
8	37	PADZZ	5905-00-988-2152	81349	RW69VSR6	RESISTOR, FIXED, WIRE.....	EA	1
8	38	PADZZ	5905-00-135-3973	81349	RCR07G272JS	RESISTOR, FIXED, COMP.....	EA	1
8	39	PADZZ	5905-00-150-0748	81349	RCR42G122JS	RESISTOR, FIXED, COMP.....	EA	1

## SECTION II

TM 11-6625-1831-23P

(1) ILLUSTRATION		(2)	(3)	(4)	(5)	(6)	(7)	(8)
(a) FIG NO.	(b) ITEM NO.	SMR CODE	NATIONAL STOCK NUMBER	FSCM	PART NUMBER	DESCRIPTION  USABLE ON CODE	U/M	QTY INC IN UNIT
8	40	PADZZ	5905-00-841-3122	81349	RN65C1781F	RESISTOR, FIXED, FILM .....	EA	1
8	41	PADZZ	5905-00-141-0743	81349	RCR07G392JS	RESISTOR, FIXED, COMP .....	EA	1
8	42	PADZZ	5905-00-106-3666	81349	RCR07G103JS	RESISTOR, FIXED, COMP .....	EA	2
8	43	PADZZ	5905-00-115-8055	81349	RCR07G393JS	RESISTOR, FIXED, COMP .....	EA	1
8	44	PADZZ	5905-00-110-7622	81349	RCR07G682JS	RESISTOR, FIXED, COMP .....	EA	1
8	45	PADZZ	5905-00-119-3504	81349	RCR07G273JS	RESISTOR, FIXED, COMP .....	EA	1
8	46	PADZZ	5905-00-104-8334	81349	RC20G331JS	RESISTOR, FIXED, COMP .....	EA	1
8	47	PADZZ	5961-00-894-0684	81349	JAN1N758A	SEMICONDUCTER, DEVIC .....	EA	1
8	48	PADZZ	5961-00-926-0209	81349	JAN1N3824A	SEMICONDUCTOR DEVIC .....	EA	1
8	49	PADZZ	5961-00-847-5246	81349	JAN1N746A	SEMICONDUCTOR DEVIC .....	EA	1
8	50	PADZZ	5961-00-051-0666	81349	JAN1N943B	SEMICONDUCTOR DEVIC .....	EA	1
8	51	XDDZZ	5310-00-934-9748	96906	M35649-244	NUT, PLAIN, HEXAGON .....	EA	4
8	52	XDDZZ	5310-00-723-9676	80205	NAS620C4L	WASHER, FLAT .....	EA	12
8	53	XDDZZ	5305-00-054-5649	96906	MS51957-15	SCREW MACHINE .....	EA	4
8	54	XDDZZ	5310-00-933-8118	96906	MS35338-135	WASHER, LOCK .....	EA	4
8	55	XDDZZ	5305-00-054-5652	96906	MS51957-18	SCREW, MACHINE .....	EA	4
8	56	PADZZ	5999-00-110-1037	13103	6103B	HEAT SINK, ELECTRICA .....	EA	2
8	57	XDDZZ	5999-00-106-3926	80063	SM-A-702426-7	MTG PAD, ELEC-ELEK .....	EA	3
8	58	XDDZZ	5940-00-082-4861	81349	SE12XC04	TERMINAL, STUD .....	EA	3
8	59	XDDZZ		80063	SM-A-701996-2	STRAP, TIEDOWN, ELEC .....	EA	5
8	60	XDDZZ	5999-00-929-3086	80063	SM-A-702426-10	MTG PAD, ELEC-ELEK .....	EA	8
8	61	XDDZZ	5940-00-082-4609	81349	SE12XC01	TERMINAL, STUD .....	EA	5
8	62	XDDZZ	5315-00-550-5011	96906	MS1652-200	PIN, SPRING .....	EA	2
8	63	XDDZZ	5340-00-480-6143	94990	55-P02191B001	HANDLE, BOW .....	EA	1
8	64	XDDZZ		94990	84-P030838001	PWB .....	EA	1

24/(25 BLANK)



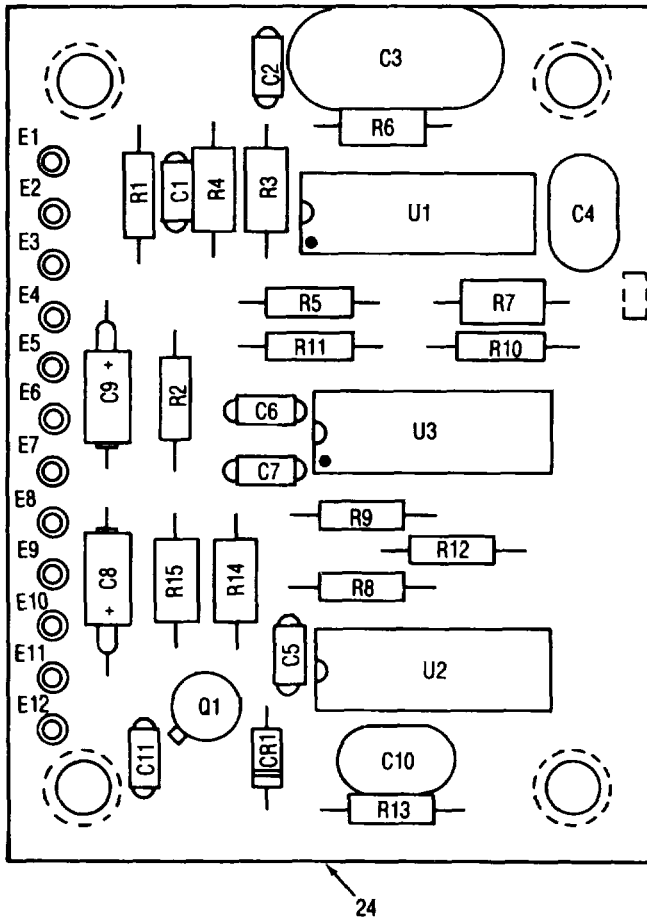
EL6KD012

Figure 9. Electronic Components Assembly 1TB1.

SECTION II

TM 11-6625-1831-23P

(1) ILLUSTRATION		(2)	(3)	(4)	(5)	(6)	(7)	(8)
(a) FIG NO.	(b) ITEM NO.	SMR CODE	NATIONAL STOCK NUMBER	FSCM	PART NUMBER	DESCRIPTION  USABLE ON CODE	U/M	QTY INC IN UNIT
						GROUP 0104 ELECTRONIC COMPONENT ASSEMBLY 1TB1		
9	1	XDFZZ		94990	31-P021988010	TERMINAL BOARD.....	EA	1
9	2	PAFZZ	5905-00-106-9344	81349	RRCR20G101JS	RESISTOR, FIXED, COMP.....	EA	1
9	3	PAFZZ	5905-00-481-8452	81349	RNC55H1960FS	RESISTOR, FIXED, FILM.....	EA	1
9	4	PAFZZ	5310-00-938-2013	96906	MS35649-224	NUT, PLAIN, HEXAGON.....	EA	2
9	5	PAFZZ	5310-00-928-2690	96906	MS35338-134	WASHER, LOCK.....	EA	2
9	6	XDFZZ		94990	31-P021988001	TERMINAL BOARD.....	EA	1
9	7	PAFZZ	5905-00-763-6686	81349	RT22C2L201	RESISTOR, VARIABLE.....	EA	1
9	8	PAFZZ	5310-00-773-7624	80205	NAS620C6	WASHER, FLAT.....	EA	2
9	9	PAFZZ	5305-00-054-5640	96906	MS51957-6	SCREW, MACHINE.....	EA	1
9	10	PAFZZ	5910-00-539-5851	56289	CSR13G684ML	CAPACITOR, FIXED, ELE.....	EA	2
9	11	PAFZZ	5940-00-082-4861	81349	SE12XC04	TERMINAL, STUD.....	EA	15
9	12	PAFZZ	5910-00-113-5679	81349	N39003/01-3090	CAPACITOR, FIXED, ELE.....	EA	2
9	13	PAFZZ	5905-00-119-3503	81349	RRCR07G271JS	RESISTOR, FIXED, COMP.....	EA	1



REF DES	ITEM NO.	REF DES	ITEM NO.
C1	1	R13	18
C2	2	R14	19
C3	3	R15	20
C4	4		
C5	2	U1	21
C6	2	U2	22
C7	2	U3	23
C8	5		
C9	5		
C10	6		
C11	2		
CR1	7		
E1	8		
E2	8		
E3	8		
E4	8		
E5	8		
E6	8		
E7	8		
E8	8		
E9	8		
E10	8		
E11	8		
E12	8		
Q1	9		
R1	10		
R2	11		
R3	12		
R4	13		
R5	14		
R6	15		
R7	16		
R8	14		
R9	14		
R10	10		
R11	17		
R12	14		

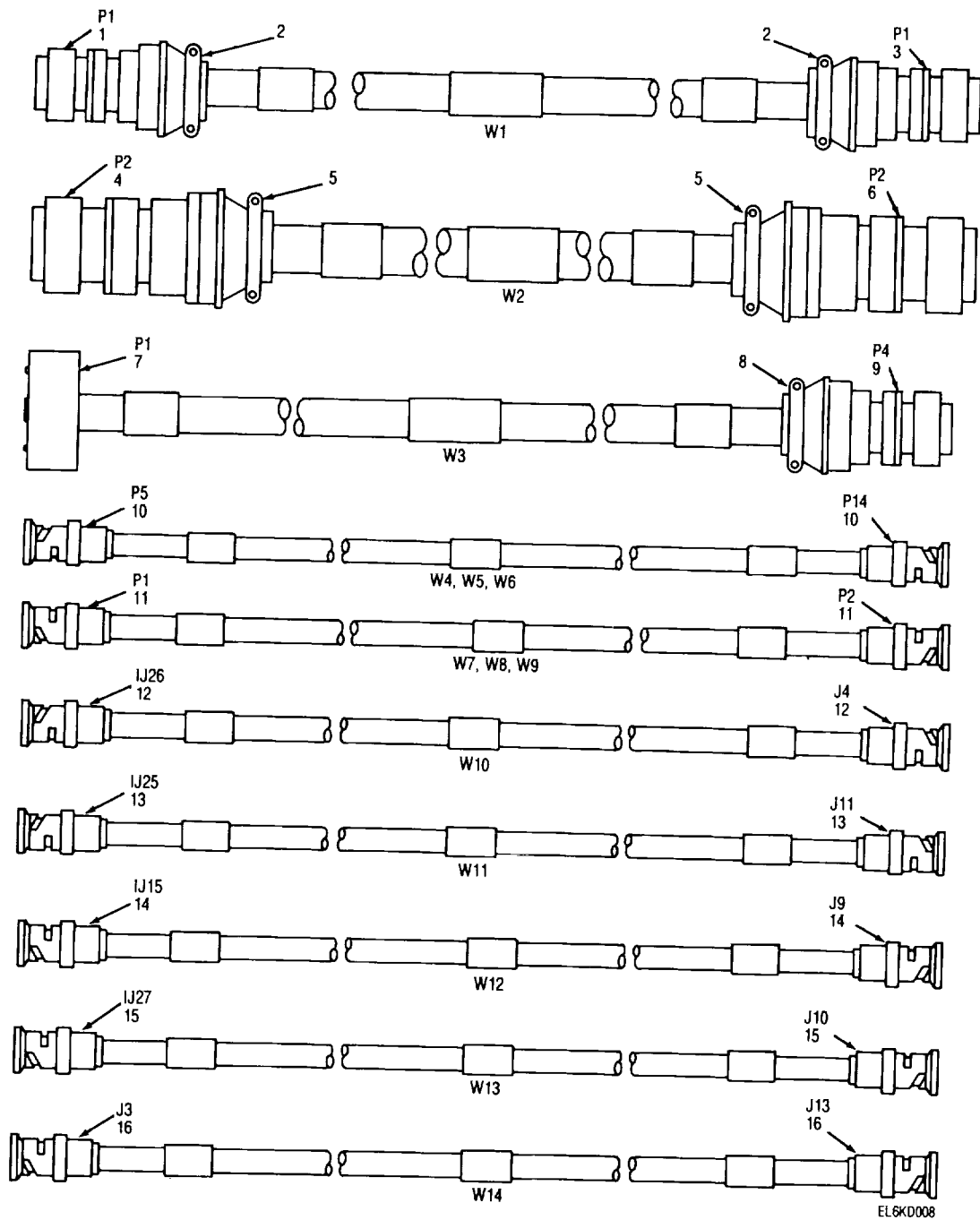
EL6K0003

Figure 10. Circuit Card Assembly ECCM 1A6

## SECTION II

TM 11-6625-1831-23P

(1) ILLUSTRATION		(2)	(3)	(4)	(5)	(6)	(7)	(8)
(a) FIG NO.	(b) ITEM NO.	SMR CODE	NATIONAL STOCK NUMBER	FSCM	PART NUMBER	DESCRIPTION  USABLE ON CODE	U/M	QTY INC IN UNIT
						GROUP 0105 CIRCUIT CARD ASSEMBY ECCM 1A6		
10	1	PADZZ	5910-00-124-0659	81349	M39014/01-1575	CAPACITOR, FIXED, CER .....	EA	1
10	2	PADZZ	5910-00-010-8717	81349	M39014/01-1593	CAPACITOR, FIXED, CER .....	EA	5
10	3	PADZZ	5910-01-081-2506	81349	CMR06F561JDDR	CAPACITOR, FIXED, MIC .....	EA	1
10	4	PADZZ	5910-01-041-6291	81349	CMR04F101J0DF	CAPACITOR, FIXED MIC .....	EA	1
10	5	PADZZ	5910-00-236-8740	81349	M39003/01-2974	CAPACITOR, FIXED, ELE .....	EA	2
10	6	PADZZ		81349	CMR04E220J0DF	CAPACITOR, FIXED, MIC .....	EA	1
10	7	PADZZ	5961-01-038-6918	81349	JAN1N4148-1	SEMICONDUCTOR DEVIC .....	EA	1
10	8	XDDZZ	5940-00-082-5094	81349	M55155-30-5	TERMINAL, STUD. ....	EA	12
10	9	PADZZ	5961-00-925-3777	81349	JAN2N2907A	TRANSISTOR.....	EA	1
10	10	PADZZ	5905-00-141-1183	81349	RCR07G101JS	RESISTOR, FIXED, COMP .....	EA	3
10	11	PADZZ	5905-00-107-0656	81349	RCR07G100JS	RESISTOR, FIXED, COMP .....	EA	1
10	12	PADZZ	5905-00-401-1399	81349	RNC55H4221FS	RESISTOR, FIXED, FILM .....	EA	1
10	13	PADZZ	5905-00-236-0513	81349	RNC55H3482FS	RESISTOR, FIXED, FILM .....	EA	1
10	14	PADZZ	5905-00-110-7620	81349	RCR07G102JS	RESISTOR, FIXCED, COMP .....	EA	4
10	15	PADZZ	5905-00-405-3022	81349	RNC55H2122FS	RESISTOR, FIXED, FILM .....	EA	1
10	16	PADZZ	5905-00-412-4049	81349	RNC55H4751FS	RESISTOR, FIXED ,FILM .....	EA	1
10	17	PADZZ	5905-00-135-3973	81349	RCR07G221JS	RESISTOR, FIXED, COMP .....	EA	1
10	18	PADZZ	5905-00-111-1679	81349	RCR07G512JS	RESISTOR, FIXED, COMP .....	EA	1
10	19	PADZZ	5905-00-138-3316	81349	RNC55H1001FS	RESISTOR, FIXED, FILM .....	EA	1
10	20	PADZZ	5905-00-828-2416	81349	RNC55H1000FS	RESISTOR, FIXED, FILM .....	EA	1
10	21	PADZZ	5962-01-071-8819	80063	SM-A-945438	MICROCIRCUIT, DIGITA.....	EA	1
10	22	PADZZ		81349	JM38510/30102BCX	MICROCIRCUIT, DIGITA.....	EA	1
10	23	PADZZ	5962-00-621-7201	80063	SM-A-945437	MICROCIRCUIT, LINEAR.....	EA	1
10	24	XDDZZ		94990	84-P01254N001	PWB .....	EA	1



EL6KD008

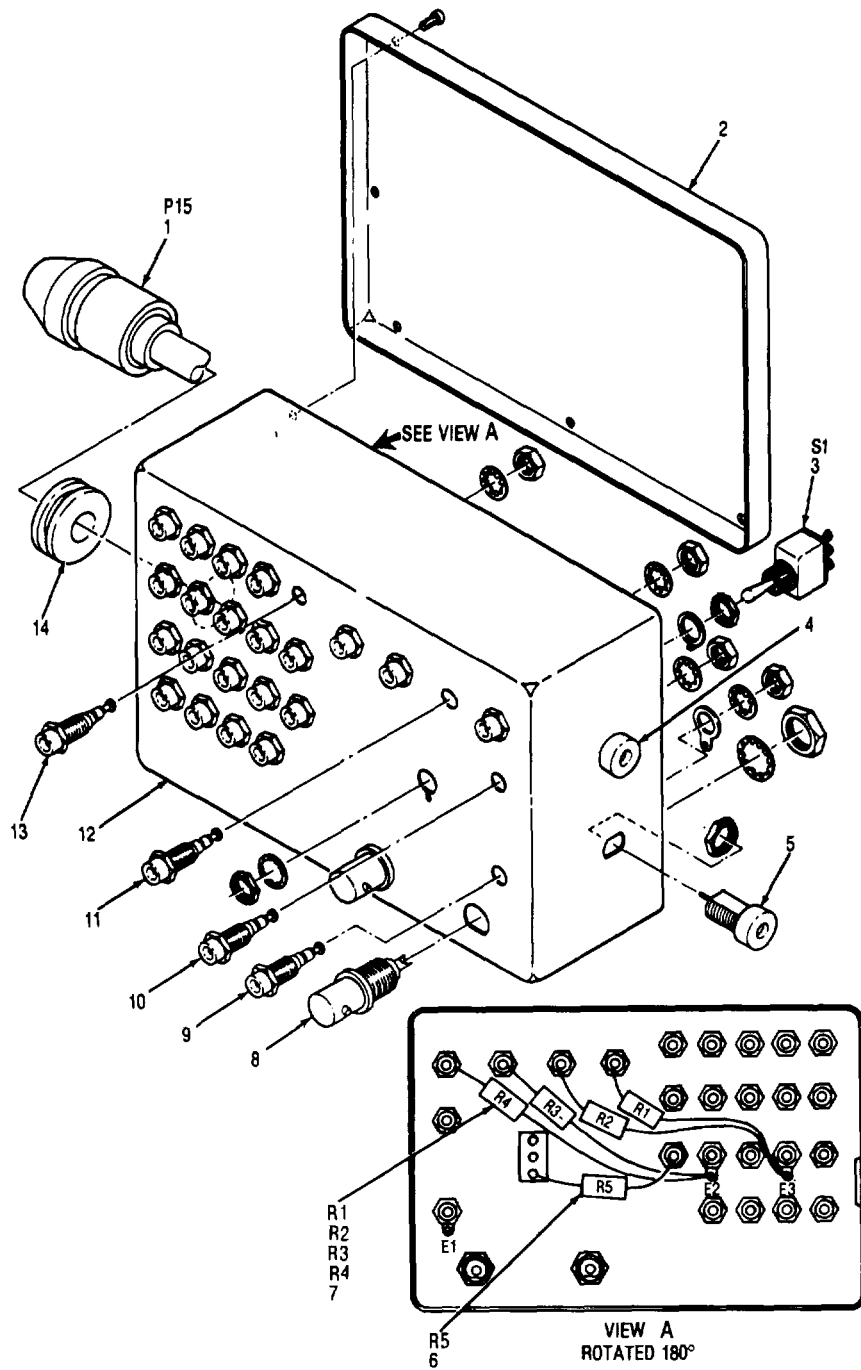
Figure 11. Cable Assemblies W1 Through W14.

SECTION II

TM 11-6625-1831-23P

(1) ILLUSTRATION		(2)	(3)	(4)	(5)	(6)	(7)	(8)
(a) FIG NO.	(b) ITEM NO.	SMR CODE	NATIONAL STOCK NUMBER	FSCM	PART NUMBER	DESCRIPTION  USABLE ON CODE	U/M	QTY INC IN UNIT
						GROUP 0106 CABLE ASSEMBLY W1 CX-12307/U		
11	1	PAFZZ	5935-00-844-4055	96906	MS3116E14-19PA	CONNECTOR, PLUG, ELEC.....	EA	1
11	2	XDFZZ		07418	S357-14-120-3A	SHIELD, ELEC CONN.....	EA	2
11	3	PAFZZ	5935-00-844-4216	96906	NS3116E14-19SX	CONNECTOR, PLUG, ELEC.....	EA	1
						GROUP 0107 CABLE ASSEMBLY W2 CX-12306/U		
11	4	PAFZZ	5935-00-850-9545	96906	MS3116E20-41PW	CONNECTOR, PLUG, ELEC.....	EA	1
11	5	XDFZZ		07418	S357-20-200-3A	SHIELD, ELEC CONN.....	EA	2
11	6	PAFZZ	5935-00-833-6619	96906	MS3116E20-41SW	CONNECTOR, PLUG, ELEC.....	EA	1
						GROUP 0108 CABLE ASSEMBLY W3 CX-12240/U		
11	7	PAFZZ	5935-01-033-9105	81348	WC596-29-1	CONNECTOR, PLUG, ELEC.....	EA	1
11	8	XDFZZ		07418	S357-14-80-3A	SHIELD, ELEC, CONN.....	EA	2
11	9	PAFZZ	5935-00-851-0221	96906	MS3116E14-5S	CONNECTOR, PLUG, ELEC.....	EA	1
						GROUP 0109, 0110, 0111 CABLE ASSEMBLY W4, W5, W6 CG-3618/U		
11	10	PAFZZ	5935-00-949-6031	80063	SM-C-531033	CONNECTOR, PLUG, ELEC.....	EA	6
						GROUP 0112, 0113, 0114 CABLE ASSEMBLY W7, W8, W9 CG-3618/U		
11	11	PAFZZ	5935-00-949-6031	80063	SMC-531033	CONNECTOR, PLUG, ELEC.....	EA	6
						GROUP 0115 CABLE ASSEMBLY W10		
11	12	PAFZZ	5935-00-949-6031	80063	SM-C-531033	CONNECTOR, PLUG, ELEC.....	EA	2
						GROUP 0116 CABLE ASSEMBLY W11		
11	13	PAFZZ	5935-01-043-6935	81349	M39012/16-0102	CONNECTOR, PLUG, ELEC.....	EA	2
						GROUP 0117 CABLE ASSEMBLY W12		
11	14	PAFZZ	5935-01-043-6935	81349	M39012/16-0102	CONNECTOR, PLUG, ELEC.....	EA	2
						GROUP 0118 CABLE ASSEMBLY W13		
11	15	PAFZZ		81349	M3912/16-0102	CONNECTOR, PLUG, ELEC.....	EA	2
						GROUP 0119 CABLE ASSEMBLY W14		
11	16	PAFZZ	5935-01-043-6935	81349	M39012/16-0102	CONNECTOR, PLUG, ELEC.....	EA	2





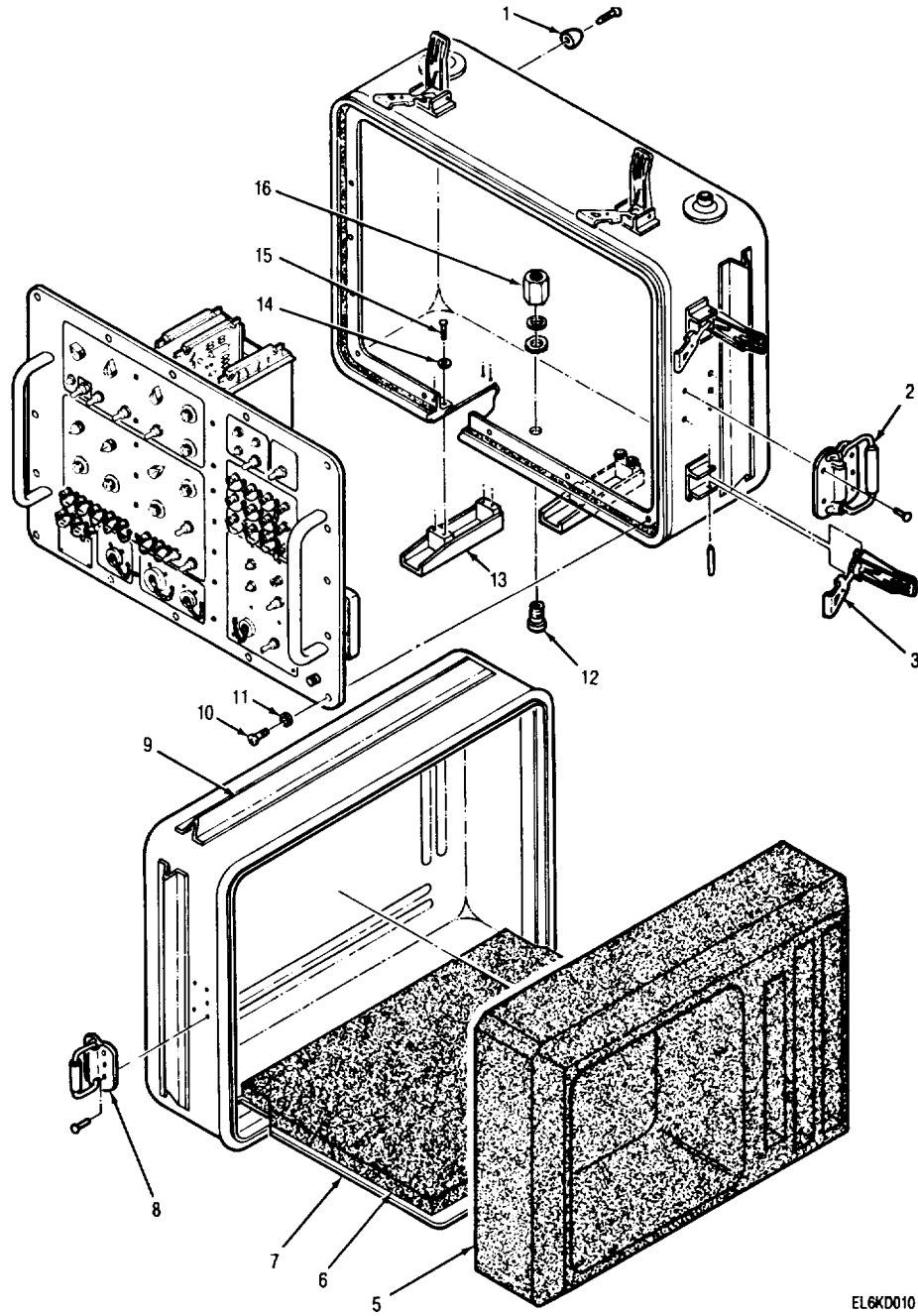
EL6KD009

Figure 12. Control-Monitor, Interface Test C-10857/APS-94F.

SECTION II

TM 11-6625-1831-23P

(1) ILLUSTRATION		(2)	(3)	(4)	(5)	(6)	(7)	(8)
(a) FIG NO.	(b) ITEM NO.	SMR CODE	NATIONAL STOCK NUMBER	FSCM	PART NUMBER	DESCRIPTION  USABLE ON CODE	U/M	QTY INC IN UNIT
						GROUP 02 CONTROL-MONITOR, INTERFACE TEST C-108T5/APS-94F		
12	1	PAFZZ	5935-00-812-3268	96906	MS3116E14-19P	CONNECTOR, PLUG, ELEC.....	EA	1
12	2	XDFZZ		19178	ZT64-96BCOTFF	COVER,CONTROL MON. ....	EA	1
12	3	PAFZZ	5930-00-402-1007	96906	MS27116-23	SWITCH,TOGGLE.....	EA	1
12	4	PAFZZ	5935-00-803-1445	74970	108-0902-001	JACK,TIP.....	EA	1
12	5	PAFZZ	5935-00-466-1245	74910	108-903-001	JACK, TIP.....	EA	1
12	6	PAFZZ		81349	RCR07GF560JS	RESISTOR, FIXED, COMP.....	EA	1
12	7	PAFZZ		81349	RCR07GF100JS	RESISTOR, FIXED, COMP.....	EA	4
12	8	PAFZZ		81349	M39012/21-001	CONNECTOR, RCPT,ELEC.....	EA	2
12	9	PAFZZ	5935-00-762-0312	81349	M39024/10-03	JACK, TIP.....	EA	1
12	10	PAFZZ	5935-00-102-4199	81349	M39024/10-02	JACK,TIP.....	EA	1
12	11	PAFZZ	5935-00-133-6587	81349	M39024/10-05	JACK,TIP.....	EA	1
12	12	XDFZZ		94990	15-PO1395N001	HOUSING, CONT MON.....	EA	1
12	13	PAFZZ	5935-00-126-4514	81349	M39024/10-01	JACK, TIP.....	EA	19
12	14	PAFZZ	5325-00-291-9366	96906	MS35489-11	GROMMET, NONMETALLIC.....	EA	1



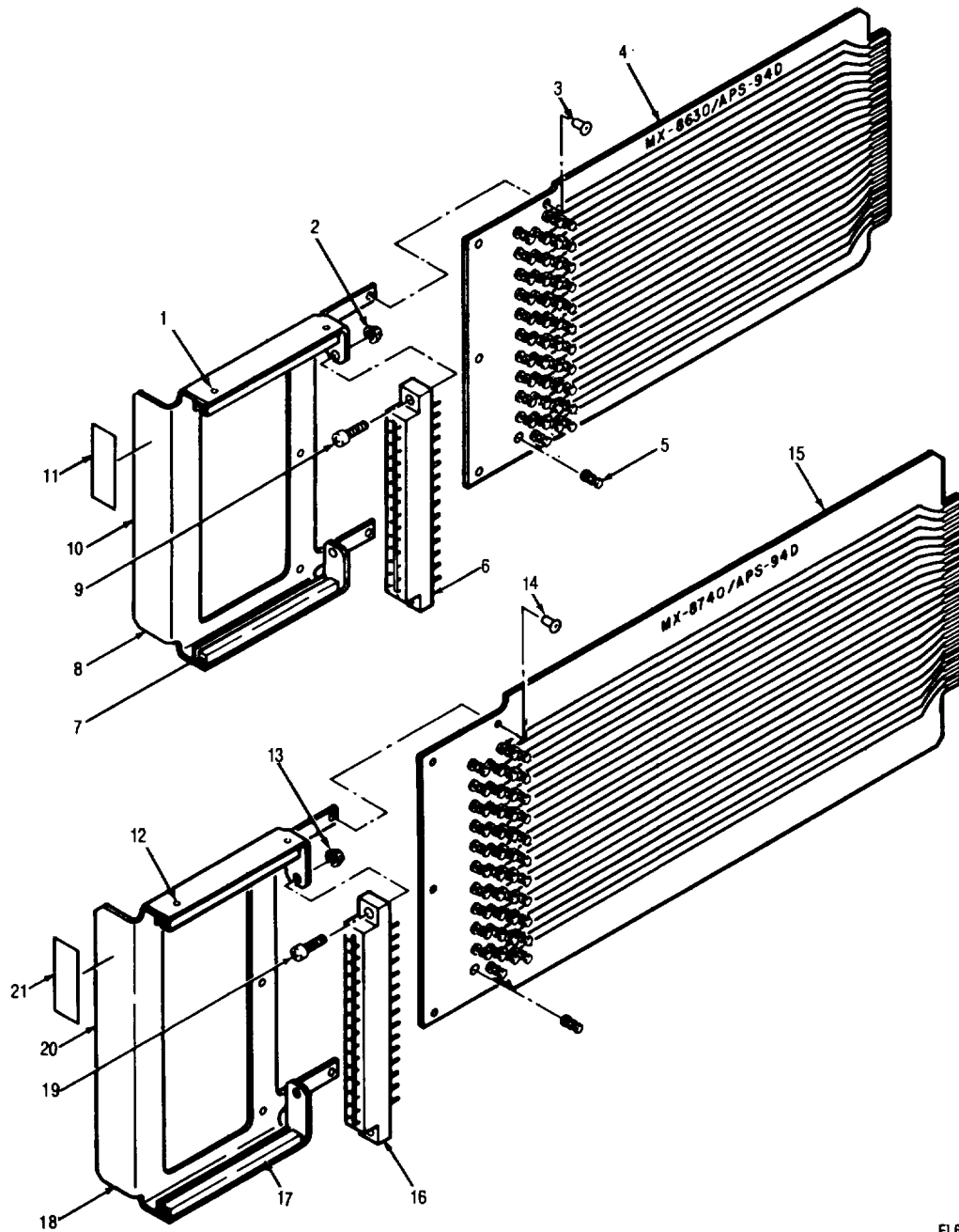
EL6KD010

Figure 13. Case, Test Set.

SECTION II

TM 11-6625-1831-23P

(1) ILLUSTRATION		(2)	(3)	(4)	(5)	(6)	(7)	(8)
(a) FIG NO.	(b) ITEM NO.	SMR CODE	NATIONAL STOCK NUMBER	FSCM	PART NUMBER	DESCRIPTION  USABLE ON CODE	U/M	QTY INC IN UNIT
13	1	PAFZZ	5340-01-091-0502	98376	ZP-7028	GROUP 03 CASE, TEST SET MOUNT, RESILIENT .....	EA	8
13	2	PAFZZ	5340-00-801-2957	96906	MS18012-5	HANDLE, BAIL .....	EA	2
13	3	XDFZZ		98376	ZSP1-224	LATCH, RIM .....	EA	8
13	5	PAFZZ	5340-01-098-0503	94990	75-P026698001	MOUNT, RESILIENT .....	EA	1
13	6	XDFZZ		94990	75-P026708001	PAD, CUSHIONING.....	EA	1
13	7	PAFZZ		98316	ZSP9-9007	INNER LID ASSY, TEST .....	EA	1
13	8	PAFZZ	5340-00-836-1938	96906	MS18012-3	HANDLE, SAIL .....	EA	2
13	9	XDFZZ		98376	ZP8049	RAIL, GUARD.....	EA	1
13	10	XDFZZ		94990	03-14364A09	SCREW, MACHINE.....	EA	1
13	11	XDFZZ		95987	FW-12	WASHER, FINISHING .....	EA	1
13	12	PAFZZ	4820-00-898-3003	19178	ZSP6-037-4	VALVE, VACUUM BREAKI.....	EA	1
13	13	XDFZZ		94990	07-P028428001	SUPPORT,CASE.....	EA	2
13	14	PAFZZ	5330-00-449-2385	98159	2054-2	PACKING WITH RETAIN .....	EA	8
13	15	PAFZZ	5305-00-054-6610	96906	MS51957-45	SCREW, MACHINE .....	EA	8
13	16	XDFZZ		98376	ZSP-6-038	NUT,RF .....	EA	1



EL6KD011

Figure 14. Extender Card Assemblies.

SECTION II

TM 11-6625-1831-23P

(1) ILLUSTRATION		(2)	(3)	(4)	(5)	(6)	(7)	(8)
(a) FIG NO.	(b) ITEM NO.	SMR CODE	NATIONAL STOCK NUMBER	FSCM	PART NUMBER	DESCRIPTION  USABLE ON CODE	U/M	QTY INC IN UNIT
						GROUP 04 EXTENDER CARD MX-8630/APS-94D		
14	1	PAFZZ	5320-00-119-6754	96906	MS20470AD2-3	RIVET,SOLID .....	EA	4
14	2	PAFZZ	5310-00-878-3292	96906	MS21043-04	NUT,SELF-LOCKING, EX.....	EA	2
14	3	PAFZZ	5320-00-117-6816	96906	MS20470AD3-5	RIVET, SOLID .....	EA	4
14	4	PAFZZ	6625-00-433-2386	94990	84-P02220800I	PRINTED WIRING BSOAR-.....	EA	1
14	5	PAFZZ	5940-00-082-4861	81349	SE12XC04	TERMINAL,STUD .....	EA	44
14	6	PAFZZ	5935-00-483-3712	81312	88D22M	CONNECTOR, RECEPTACL.....	EA	1
14	7	PAFZZ	5340-00-137-1435	18915	35-6XS2-6-3	HOLDER, PRINTED CIRC.....	EA	2
14	8	XDFZZ		94990	07-P02221B010	BRACKET, ELEC CONN .....	EA	1
14	9	XDFZZ		80063	SM-A-701395-3	SCREW, MACHINE .....	EA	2
14	10	XDFFF		94990	07-P02221B001	BRACKET, ELEC CONN .....	EA	1
14	11	XDFZZ		94990	33-P02479B0001	PLATE,INSTRUCTION .....	EA	1
						GROUP 05 EXTENDOR CARD' MX-8740/APS-94C		
14	12	PAFZZ	5320-00-119-6154	96906	MS20470AD2-3	RIVET, SOLID .....	EA	4
14	13	XDFZZ		96906	MS21043L04	NUT, PLAIN, HEXAGON .....	EA	2
14	14	PAFZZ	5320-00-117-6816	96906	MS20470AD3-5	RIVET, SOLID .....	EA	5
14	15	XDFZZ		94990	84-P03068B001	PWB .....	EA	1
14	16	PAFZZ		81312	8BD22M0	CONNECTOR, RECEPTACL.....	EA	1
14	17	PAFZZ	5340-00-137-1435	18915	35-6S2-6-3	HOLDER, PRINTEDCIRC.....	EA	1
14	18	XDFZZ		94990	07-P02518B010	BRACKET,ELEC CONN .....	EA	1
14	19	XDFZZ		80063	SM-A-701395-3	SCREW, MACHINE .....	EA	2
14	20	XDFZZ		94990	07-P02518B001	BRACKET, ELEC CONN .....	EA	1
14	21	XDFZZ		94990	33-P02479B001	PLATE, INSTRUCTION .....	EA	1

## NATIONAL STOCK NUMBER AND PART NUMBER INDEX

NOTE: LATEST NATIONAL STOCK NUMBER AND PART NUMBER ASSIGNMENTS ARE INCLUDED AT END OF INDEX

STOCK NUMBER	FIG.	ITEM	STOCK NUMBER	FIG.	ITEM
5910-00-007-2000	7	8	5962-00-117-4379	6	1
5910-00-010-8111	10	2	5320-00-117-6816	14	3
5910-00-010-8118	6	2	5320-00-117-6816	14	14
5910-00-010-8718	7	5	5320-00-111-6811	4	16
5910-00-010-8118	8	3	5320-00-117-6828	5	2
5961-00-052-0666	8	50	5320-00-111-6828	5	1
5305-00-054-5640	9	9	5320-00-117-6828	5	34
5305-00-054-5649	8	53	5320-00-111-6829	5	6
5305-00-054-5650	3	21	5S05-00-118-4559	1	41
5305-00-054-5651	3	22	5905-00-119-3503	1	20
5305-00-054-5652	8	55	5905-00-119-3503	9	13
5305-00-054-6652	5	9	5905-00-119-3504	8	45
5305-00-054-6652	5	19	5320-00-119-6154	5	5
5305-00-054-6653	2	23	5320-00-119-6754	14	1
5305-00-054-6653	5	11	5320-00-119-6754	14	12
5305-00-054-6653	5	38	5905-00-119-8768	7	43
5305-00-054-6654	5	26	5505-00-121-9932	7	39
5305-00-054-6670	13	15	5905-00-121-9932	8	26
5305-00-054-6671	2	18	5910-00-124-0659	10	1
5305-00-054-6671	4	12	5340-00-121-0155	2	26
5305-00-054-6682	2	15	5905-00-131-1255	1	37
5305-00-056-9961	4	5	5905-00-135-3973	8	38
5905-00-060-3731	8	20	5905-00-135-3973	10	17
5905-00-062-2291	8	32	5905-00-135-3975	7	29
5310-00-069-5291	4	11	5505-00-135-6046	7	33
5325-00-074-3301	5	40	5340-00-137-1435	14	7
5940-00-082-4861	8	58	5340-00-131-1435	14	17
5940-00-082-4861	9	11	5905-00-138-3376	10	19
5940-00-082-4861	14	5	5905-00-141-0143	1	23
5940-00-082-4869	6	25	5505-00-141-0743	8	41
5940-00-082-4869	7	52	5905-00-141-1130	8	36
5940-00-082-4869	8	61	5505-00-141-1183	7	31
5940-00-082-5094	10	8	5505-00-141-1183	10	10
5935-00-086-2368	4	7	5910-00-144-4383	6	3
5910-00-091-8057	6	5	5510-00-144-4383	7	9
5905-00-104-8334	8	46	5905-00-150-0748	8	39
5905-00-104-8348	8	23	5910-00-154-0547	8	4
5905-00-104-8363	7	25	5999-00-156-7358	2	14
5961-00-104-8426	7	16	5999-00-161-9182	3	25
5961-00-104-9898	1	19	6210-00-183-0361	3	3
5905-00-105-7764	6	10	4210-00-183-0453	3	2
5905-00-105-1764	7	26	5910-00-189-4248	6	4
5905-00-105-1764	8	24	5910-00-189-4248	1	10
5905-00-105-7768	1	22	5910-00-189-4248	8	2
5905-00-106-1356	1	32	6625-00-194-2856	1	15
5905-00-106-3666	1	28	5950-00-224-6130	5	42
5905-00-106-3666	8	42	5930-00-224-6143	3	4
5905-00-106-3668	6	12	5561-00-226-8584	7	14
5999-00-106-3926	1	49	5961-00-226-8584	8	16
5999-00-106-3926	8	57	5905-00-236-0513	10	13
5905-00-106-9344	6	14	5910-00-236-8140	10	5
5905-00-106-9344	7	44	5905-00-247-8132	8	28
5905-00-106-9344	9	2	6625-00-250-4595	2	3
5905-00-107-0656	8	25	5305-00-253-5607	2	30
5905-00-110-0196	8	35	5960-00-269-2219	3	28
5905-00-110-0310	8	19	5325-00-291-9366	12	14
5999-00-110-1037	8	56	5562-00-349-8844	6	16
5905-00-110-7620	6	11	5962-00-349-8844	7	46
5905-00-110-7620	7	24	5935-00-351-0368	3	23
5905-00-110-7620	8	22	5935-00-355-4919	5	8
5905-00-110-7620	10	14	6210-00-357-1019	2	6
5905-00-110-7622	8	44	5962-00-361-8646	6	21
5905-00-111-1679	10	18	5962-00-401-7814	8	1
5910-00-111-1693	8	7	5930-00-402-1007	12	3
5905-00-111-4727	7	38	5905-00-402-1399	10	12
5905-00-111-4852	8	31	5905-00-405-3022	10	15
5905-00-113-4861	7	21	5505-00-412-4049	10	16
5910-00-113-5499	7	2	5910-00-412-9235	1	6
5910-00-113-5499	8	5	5962-00-430-7301	6	20
5910-00-113-5679	9	12	6625-00-433-2386	14	4
5905-00-114-0711	1	30	6625-00-439-6144	2	2
5905-00-114-0711	8	18	6625-00-441-9282	2	4
5905-00-114-5343	6	13	5961-00-441-9389	8	14
5905-00-114-5343	7	42	5330-00-449-2385	13	14
5905-00-114-5344	7	34	5999-00-452-1339	3	18
5905-00-114-5381	7	40	5962-00-453-7659	6	18
5905-00-115-3560	1	35	5905-00-454-2815	7	36
5905-00-115-8055	1	21	5910-00-460-0868	1	7
5905-00-115-8055	8	43	5935-00-466-1245	12	5
5905-00-116-8555	1	45	5340-00-470-6021	3	31

SECTION IV

TM 11-6625-1831-23P

NATIONAL STOCK NUMBER AND PART NUMBER INDEX

STOCK NUMBER	FIG.	ITEM	STOCK NUMBER	FIG.	ITEM
5905-00-477-1637	8	21	5925-00-871-6416	4	11
5340-00-480-6143	6	27	5310-00-878-3292	14	2
5340-00-480-6143	7	54	5310-00-880-5978	2	17
5340-00-480-6143	8	63	5310-00-881-1437	4	9
5905-00-481-8452	9	3	5935-00-885-2264	2	21
5962-00-481-8712	1	1	5310-00-893-2734	4	14
5935-00-483-3772	14	6	5961-00-894-0684	8	47
6625-00-489-0421	1	4	4820-00-898-3003	13	12
6625-00-489-0422	1	3	5935-00-899-9361	2	24
5930-00-491-8714	3	6	6240-00-905-6050	7	13
6625-00-493-7476	1	7	5961-00-911-6015	1	18
6625-00-493-7479	1	6	5961-00-911-6015	8	15
5930-00-494-4657	2	9	5961-00-925-3777	7	15
5930-00-494-4657	4	4	5961-00-925-3171	8	12
6625-00-494-6616	1	5	5961-00-925-3777	10	9
5910-00-539-5851	9	10	5961-00-926-0209	8	48
5315-00-550-5011	6	26	5961-00-926-0237	6	9
5315-00-550-5011	7	53	5961-00-926-0237	1	17
5315-00-550-5011	8	62	5310-00-928-2690	9	5
5905-00-552-2859	3	8	5999-00-929-3086	6	24
5905-00-552-5478	3	29	5999-00-929-3086	7	48
5355-00-556-0145	3	5	5999-00-929-3086	8	60
5905-00-556-3041	3	12	5310-00-929-6395	5	20
5310-00-595-6211	3	17	5310-00-929-6395	5	24
5310-00-595-6211	5	10	5310-00-929-6395	5	29
5930-00-615-7880	2	8	5310-00-929-6395	5	36
5962-00-621-7201	10	23	5910-00-933-0127	8	6
5930-00-655-1515	2	1	5310-00-933-8118	3	16
5930-00-655-1522	3	1	5310-00-933-8118	5	14
5930-00-655-1582	3	26	5310-00-933-8118	8	54
5355-00-680-1357	2	7	5310-00-933-8119	2	11
5935-00-702-4199	12	10	5310-00-934-9748	3	15
5310-00-722-5998	2	22	5310-00-934-9748	5	15
5310-00-722-5998	5	12			
5310-00-722-5998	5	21	5310-00-934-9748	8	51
5310-00-722-5998	5	25	5310-00-934-9759	2	12
5310-00-722-5998	5	30	5310-00-934-9761	5	28
5310-00-722-5998	5	37	6625-00-938-0279	3	27
5310-00-723-9676	4	6	5961-00-938-1135	7	12
5310-00-723-9676	8	52	5310-00-938-2013	9	4
5935-00-728-4514	12	13	5950-00-943-9174	6	8
5935-00-733-6587	12	11	5961-00-949-1432	8	13
5905-00-761-5758	6	15	5935-00-949-6031	11	10
5935-00-762-0312	12	9	5935-00-949-6031	11	11
5935-00-762-1392	2	27	5935-00-949-6031	11	12
6625-00-762-4921	1	16	5245-00-950-4237	5	41
5905-00-763-6686	9	7	5961-00-957-6865	5	43
6240-00-763-1744	2	5	5961-00-957-6865	8	9
5910-00-764-2758	7	11	5935-00-984-9027	3	19
5961-00-765-4589	8	17	5915-00-981-4634	4	1
5310-00-773-7624	9	8	5905-00-988-2152	8	37
5340-00-801-2957	13	2	5935-01-033-9105	11	7
5935-00-803-1445	12	4	5961-01-038-6918	10	1
5310-00-807-1471	4	8	5910-01-041-6291	10	4
5940-00-810-6269	5	35	5935-01-043-6935	11	13
5935-00-812-3268	12	1	5935-01-043-6935	11	14
5905-00-828-2416	10	20	5935-01-043-6935	11	16
5905-00-833-5814	8	27	5910-01-058-9985	6	6
5935-00-833-6619	11	6	5910-01-059-6527	7	3
5905-00-835-6675	8	30	5841-01-070-3725	1	14
5340-00-836-1938	13	8	5962-01-077-8819	10	21
5905-00-841-3122	8	40	5910-01-081-2506	10	3
5961-00-842-9864	6	7	5340-01-098-0502	13	1
5961-00-842-9864	8	10	5340-01-098-0503	13	5
5935-00-844-4055	11	1	5995-01-103-7771	1	11
5935-00-844-4216	11	3	5995-01-106-2188	1	12
5961-00-845-6458	6	23	5995-01-106-2189	1	10
5961-00-847-5246	7	47	5995-01-106-2190	1	9
5961-00-847-5246	8	49	5995-01-106-2191	1	8
5935-00-849-7189	3	14	6625-01-106-2316	5	18
5935-00-850-9545	11	4	6625-01-108-9269	1	13
5935-00-851-0221	11	9	6625-01-109-1921	1	2
5935-00-853-7596	2	20			

FSCM	PART NUMBER	FIGURE NO.	ITEM NO.	FSCM	PART NUMBER	FIGURE NO.	ITEM NO.
80058	CG-3618/U3FT	1	6	81349	CL21BG121UPE	8	8
80058	CG-3618/U6FT	1	7	81349	CL21BJ151TPE	8	7



## NATIONAL STOCK NUMBER AND PART NUMBER INDEX

FSCM	PART NUMBER	FIGURE NO.	ITEM NO.	FSCM	PART NUMBER	FIGURE NO.	ITEM NO.
81349	CL21BJ600TPE	8	6	96906	MS20470AD4-7	5	6
81349	CL33BD550MNE	7	4	96906	MS21042-L04	4	8
81349	CMR04C100D0DR	7	3	96906	MS21043-04	14	2
81349	CMR04E220J0DP	10	6	96906	MS21043L04	14	13
81349	CMR04F101J0DP	10	4	96906	MS21266-2N	5	40
81349	CMR04F331GOAR	6	6	96906	MS21318-8	2	30
81349	CMR06F561J0DR	10	3	96906	MS24693PC271	2	16
81349	CMO4CD050D03	7	11	96906	MS24693-PC4	4	5
81349	CMO4FD101J03	6	5	96906	MS25237-387	2	5
81349	CMO5FD101J03	7	7	96906	MS2526101	5	41
71744	CM2158	7	13	96906	MS27716-23	12	3
81349	CSR13C336KL	6	4	96906	MS3110E14-19S	3	14
81349	CSR13C336KL	7	10	96906	MS3110E14-19SX	3	23
81349	CSR13C336KL	8	2	96906	MS3110E14-5P	4	7
56289	CSR13G684ML	9	10	96906	MS3110E2-41SW	3	19
80058	CX-12240U6FT	1	5	96906	MS3116E14-19P	12	1
80058	CX-12306U3FT	1	4	96906	MS3116E14-19PX	11	1
80058	CX-12307U3FT	1	3	96906	MS3116E14-19SX	11	3
18324	C6177J	6	16	96906	MS3116E14-5S	11	9
18324	C6177J	7	46	96906	MS3116E20-41PW	11	4
95987	FW-12	13	11	96906	MS3116E20-41SW	11	6
81349	JAN1N3611	5	43	96906	MS3181-14C	2	24
81349	JAN1N3611	8	9	96906	MS3181-20C	2	27
81349	JAN1N3824A	8	48	96906	MS35058-23	2	1
81349	JAN1N4148	7	12	96906	MS35058-30	3	1
81349	JAN1N4148-1	10	7	96906	MS35059-23	3	26
81349	JAN1N746A	1	47	96906	MS35059-26	2	8
81349	JAN1N746A	8	49	96906	MS35338-134	9	5
81349	JAN1N756A	6	23	96906	MS35338-135	3	16
81349	JAN1N758A	8	47	96906	MS35338-135	3	14
81349	JAN1N914	6	7	96906	MS35338-135	8	54
81349	JAN1N914	8	10	96906	MS35338-136	S	20
81349	JAN1N943B	8	50	96906	MS35338-136	5	24
81349	JAN2N2060	8	17	96906	MS35338-136	5	29
81349	JAN2N2219A	8	13	96906	MS35338-136	5	36
81349	JAN2N2222	7	14	96906	MS35338-137	2	11
81349	JAN2N2222	8	16	96906	MS35489-11	12	14
81349	JAN2N2369A	6	9	96906	MS35649-224	9	4
81349	JAN2N2369A	7	17	96906	MS35649-244	3	15
81349	JAN2N2907A	7	15	96906	MS35649-244	5	15
81349	JAN2N2907A	8	12				
81349	JAN2N2907A	10	9	96906	M35649-244	8	51
81349	JAN2N32514A	7	18	96906	MS35649-264	5	28
81349	JAN2N3251A	8	15	96906	MS35649-284	2	12
81349	JAN2N3506	7	19	96906	MS51957-15	8	53
81349	JAN2N3715	8	14	96906	MS51957-16	3	22
81349	JAN2N3823	7	16	96906	MS51957-17	3	22
01121	JD1N056S252BA	3	13	96906	MS51957-18	5	9
81349	JM3851030102BCX	10	22	96906	MS51957-18	8	55
06915	KKL-4	3	31	96906	MS51957-28	5	19
81349	LH732LC27GT2	2	6	96906	MS51957-29	2	23
81349	LH732LC27RT2	3	2	96906	MS51957-29	5	11
81349	LH732LC21WT2	3	3	96906	MS51957-29	5	38
04713	MC1520G	7	1	96906	MS51957-30	5	26
04713	MC1561R	8	1	96906	MS51957-45	13	15
04713	MC1710G	6	1	96906	MS51957-46	2	18
75237	MF6000-08	4	14	96906	MS51551-46	4	12
96906	MS15795-803	3	17	96906	MS51957-55	2	15
96906	MS15795-803	5	10	96906	MS51957-6	9	9
96906	MS15795-805	2	22	96906	MS75088-7	6	8
96906	MS15795-805	5	12	96906	MS91528-1F28	2	7
96906	MS15795-805	5	21	96906	MS91528-1K28	3	5
96906	MS15795-805	5	25	80058	MX-8630/APS-94D	1	15
96906	MS15795-805	5	30	80058	MX-8740/APS-94D	1	16
96906	MS15795-805	5	37	81349	M1573302-0002	4	1
96906	MS15795-807	2	17	81349	M2109721-163	5	8
96906	MS16562-200	6	26	81349	M3851000206BDB	6	21
96906	MS16562-200	7	53	81349	M39003-01-2962	7	8
96906	MS16562-200	8	62	81349	M39003-01-3026	6	3
96906	MS18012-3	13	8	81349	M39003-01-3026	7	9
96906	MS18012-5	13	2	81349	M39003-01-3032	8	4
96906	MS20470AD2-3	5	5	81349	M39003-01-2974	10	5
96906	MS20470AD2-3	14	1	81349	M39003-01-2981	7	6
96906	MS20470AD2-3	14	12	81349	M39003-01-3090	9	12
96906	MS20470AD3-5	14	3	81349	M39012-21-0002	2	20
96906	MS20470AD3-5	14	14	81349	M39012/16-0102	11	13
96906	MS20470AD3-6	4	16	81349	M39012/16-0102	11	14
96906	MS20470AD4-6	5	2	81349	M39012/16-0102	11	16
96906	MS20470AD4-6	5	7	81349	M39012/21-001	12	8
96906	MS20470AD4-6	5	34	81349	M39012/25-0006	2	21

## NATIONAL STOCK NUMBER AND PART NUMBER INDEX

FSCM	PART NUMBER	FIGURE NO.	ITEM NO.	FSCM	PART NUMBER	FIGURE NO.	ITEM NO.
81349	M39014/01-1575	10	1	81349	RNC55H1000FS	10	20
81349	M39014/01-1593	10	2	81349	RNC55H1001FS	10	19
81349	M39014/02-1338	6	2	81349	RNC55H1960FS	9	3
81349	M39014/02-1338	7	5	81349	RNC55H2212FS	10	15
81349	M39014/02-1338	8	3	81349	RNC55H3482FS	10	13
81349	M39014/02-1350	7	2	81349	RNC55H4221FS	10	12
81349	M39014/02-1350	8	5	81349	RNC55H4751FS	10	16
81349	M39019/05-230	4	17	81349	RN65C1241F	8	27
81349	M39024/10-01	12	13	81349	RN65C1781F	8	40
81349	M39024/10-02	12	10	81349	RN65C3161F	8	29
81349	M39024/10-03	12	9	81349	RN65C5112F	8	33
81349	M39024/10-05	12	11	81349	RN65C6811F	8	30
81349	M3912/16-0102	11	15	81349	RN65C9092F	8	32
81349	M5423/09-08	3	6	81349	RT22C2L201	9	7
81349	M55155-30-5	10	8	81349	RV4NAYS101A	3	12
80205	NAS620C4L	4	6	81349	RV4NAYS102A	3	29
80205	NAS620C4L	8	52	81349	RV4NAYS501A	3	8
80205	NAS620C6	9	8	81349	RW69V1R0	8	20
80205	NAS620C8	4	11	81349	RW69V5R6	8	37
81349	PB01FA04	3	28	81349	RW81U1R82F	8	34
81349	RCRO5G471JS	6	15	81349	SE12XC01	6	25
81349	RCRO7GF100JS	12	7	81349	SE12XC01	7	52
81349	RCRO7GF56QJS	12	6	81349	SE12XC01	8	61
81349	RCRO7GIOOJS	8	25	81349	SE12XC04	8	58
81349	RCRO7G101JS	7	31	81349	SE12XC04	9	11
81349	RCRO7G101JS	10	10	81349	SE12XC04	14	5
81349	RCRO7G102JS	6	11	80063	SM-A-701395-3	14	9
81349	RCRO7G102JS	7	24	80063	SM-A-701395-3	14	19
81349	RCR07G102JS	8	22	80063	SM-A-701996-2	7	50
81349	RCR07G102JS	10	14	80063	SH-A-701996-2	8	59
81349	RCR07G103JS	t	28	80063	SM-A-702426-10	6	24
81349	RCR07G103JS	8	42	80063	SM-A-702426-10	7	48
81349	RCR07G122JS	7	37	80063	SM-A-702426-10	8	60
81349	RCR07G152JS	7	32	80063	SM-A-702426-3	7	51
81349	RCR07G153JS	7	45	80063	SM-A-702426-7	7	49
81349	RCR07G182JS	6	13	80063	SM-A-702426-7	8	57
81349	RCR07G182JS	7	42	80063	SM-A-945437	10	23
81349	RCR07G183JS	7	35	80063	SN-A-945438	10	21
81349	RCR07G184JS	7	34	80063	SM-A-945671-1	1	8
81349	RCR07G220JS	6	12	80063	SN-A-945671-2	1	9
81349	RCR07G221JS	8	38	80063	SM-A-945671-3	1	10
81349	RCR07G221JS	10	17	80063	SM-A-945611-4	1	11
81349	RCR07G222JS	6	10	80063	SM-A-945671-5	1	12
81349	RCR07G222JS	7	26	80063	SM-C-531033	11	10
81349	RCR07G222JS	8	24	80063	SM-C-531033	11	11
81349	RCR07G271JS	7	20	80063	SM-C-531033	11	12
81349	RCR07G271JS	9	13	98291	STSM29TURP47	5	35
81349	RCR07G272JS	7	38	07418	S357-14-12D-3A	11	2
81349	RCR07G273JS	8	45	07418	S357-14-8D-3A	11	8
81349	RCR07G333JS	7	41	07418	S357-20-20D-3A	11	5
81349	RCR07G390JS	7	21	18324	S8241Q	6	19
81349	RCR07G391JS	7	39	18324	S8815J	6	20
81349	RCR07G391JS	8	26	18324	S8816J	6	17
81349	RCR07G392JS	7	23	18324	S8855J	6	18
81349	RCR07G392JS	8	41	07263	U68931051X	6	22
81349	RCR07G393JS	7	27	81348	WC596-29-1	11	7
81349	RCR07G393JS	8	43	98376	ZP-7028	13	1
81349	RCR07G472JS	7	30	98376	ZP8049	13	9
81349	RCR07G472JS	8	18	98376	ZSP-6-038	13	16
81349	RCR07GS12JS	10	18	98376	ZSP1-224	13	3
81349	RCR07G561JS	7	22	19178	ZSP6-037-4	13	12
81349	RCR07G680JS	7	29	98376	ZSP9-9007	13	7
81349	RCR07G681JS	7	33	19178	ZT64-96BCOTFF	12	2
81349	RCR07G682JS	8	44	94990	01-P01252N001	1	2
81349	RCR07G820JS	7	25	94990	01-P01253N001	5	18
81349	RCR07G821JS	7	43	94990	01-P01264N001	1	13
81349	RCR20G101JS	6	14	94990	01-P023938001	2	13
81349	RCR20G101JS	7	44	94990	01-P024018001	5	27
81349	RCR20G101JS	9	2	94990	01-P03072B001	2	2
81349	RCR20G102JS	8	35	94990	01-P03077B001	2	3
81349	RCR20G180JS	7	40	94990	01-P03082B001	2	4
81349	RCR20G2R7JS	8	31	94990	02-14166A03	5	44
81349	RCR20G272JS	8	36	94990	02-15142A03	2	33
81349	RCR20G331JS	8	46	94990	02-15142A03	3	32
81349	RCR20G332JS	8	23	94990	02-15142A03	5	16
81349	RCR20G392JS	8	19	94990	02-15142A03	5	39
81349	RCR32G180JS	7	36	94990	03-14364A09	13	10
81349	RCR32G471JS	8	28	94990	07-P021978001	5	33
81349	RCR42G122JS	8	39	94990	07-P022178001	5	13
81349	RCR42G270JS	8	21	94990	07-P022188001	5	3

## NATIONAL STOCK NUMBER AND PART NUMBER INDEX

FSCM	PART NUMBER	FIGURE NO.	ITEM NO.	FSCM	PART NUMBER	FIGURE NO.	ITEM NO.
94990	07-P02218B002	5	1	94990	33-P06455B001	5	31
94990	07-P02221B001	14	10	94990	33-P11701B001	2	28
94990	07-P02221B010	14	8	18915	35-6S2-12-3	5	4
94990	07-P02518B001	[4	20	18915	35-6S2-6-3	14	1
94S9C	07-P02518B010	14	18	18915	35-6S2-6-3	14	17
94990	07-P02842B001	13	13	94990	40-P03390B001	3	4
97539	1N1030RF1	2	9	94990	40-P03391B003	3	7
97539	1N1030RF1	4	4	94990	40-P03392B001	3	10
74970	108-0902-001	12	4	94990	40-P03393B001	3	9
74970	108-903-001	12	5	94990	42-P02205B001	2	10
80539	13681-82	4	9	94990	42-P03890B001	3	11
94990	15-P01395N001	12	12	94990	43-15054A28	5	23
94990	15-P02199B001	4	2	94990	55-P02191B001	6	27
94990	15-P02199B011	4	15	94990	55-P02191B001	1	54
94990	15-P02345B001	1	1	94990	55-P02191B001	8	63
94990	15-P02377B001	4	10	94990	55-P031766B001	1	14
98159	2054-2	13	14	94990	55-15041A04	2	26
94990	24-P02215e001	5	42	94990	58-P11601B001	4	J
94990	27-P022088001	3	24	13103	61038	8	56
94990	27-P022088010	5	45	73138	6301R1K	3	30
94990	27-P022088011	5	17	94990	64-P01256N001	2	34
94990	27-P022088012	5	32	94990	64-P01257N001	2	31
94990	27-P02208B013	5	46	94990	64-P01263N001	2	19
94990	29-15122A17	2	32	94990	64-P02202B001	3	217
94990	31-P021988001	9	6	94990	75-P02669B001	13	5
94990	31-P021988010	9	1	94990	75-PC2670B001	13	6
94990	32-P021958001	3	25	81312	8BD22M	14	6
94990	32-P022271003	3	18	81312	8BD22M0	14	16
94990	32-P02227B006	3	20	94990	84-PC1254N001	10	24
94990	32-P023918001	2	14	94990	84-P02220B001	14	4
94990	33-P01262N001	2	29	94990	84-P03068B001	14	15
94990	33-P024798001	14	11	94990	84-P03013B001	6	28
94990	33-P024798001	14	21	94990	84-P03078B001	7	55
94990	33-P025548001	2	25	94990	84-PC3083B001	8	64
94990	33-P064558001	4	13	06540	9739-A-0632	5	22

**LATEST NATIONAL STOCK NUMBER ASSIGNMENT**

STOCK NUMBER	FIGURE NO.	ITEM NO.
5905-00-107-0656	10	11

**LATEST PART NUMBER ASSIGNMENTS**

FSCM	PART NUMBER	FIGURE NO.	ITEM NO.
81349	JAN1N276	8	11
81349	RCR07G100JS	10	11

By Order of the Secretary of the Army:

**E.C. MEYER**  
*General, United States Army*  
*Chief of Staff*

Official:

**ROBERT M. JOYCE**  
*Brigadier General, United States Army*  
*The Adjutant General*

Distribution:

To be distributed in accordance with DA Form 12-36, Organizational Maintenance requirements for AN/APS-94.

☆ U.S. GOVERNMENT PRINTING OFFICE: 1981-505-028/1402

RECOMMENDED CHANGES TO EQUIPMENT TECHNICAL PUBLICATIONS



THEN... JOT DOWN THE DOPE ABOUT IT ON THIS FORM, CAREFULLY TEAR IT OUT, FOLD IT AND DROP IT IN THE MAIL!

**SOMETHING WRONG WITH THIS PUBLICATION?**

FROM: (PRINT YOUR UNIT'S COMPLETE ADDRESS)

DATE SENT

PUBLICATION NUMBER

PUBLICATION DATE

PUBLICATION TITLE

BE EXACT... PIN-POINT WHERE IT IS

PAGE NO.

PARA-GRAPH

FIGURE NO.

TABLE NO.

IN THIS SPACE TELL WHAT IS WRONG AND WHAT SHOULD BE DONE ABOUT IT:

TEAR ALONG PERFORATED LINE

PRINTED NAME, GRADE OR TITLE, AND TELEPHONE NUMBER

SIGN HERE:

DA FORM 2028-2 JUL 79

PREVIOUS EDITIONS ARE OBSOLETE.

P.S.—IF YOUR OUTFIT WANTS TO KNOW ABOUT YOUR RECOMMENDATION MAKE A CARBON COPY OF THIS AND GIVE IT TO YOUR HEADQUARTERS.

